



Be Prepared for Spring Flooding

Dreaming of spring? Prepare for it, too! The spring freshet is just around the corner, and RVCA staff are using stream gauges, weather stations, snowpack measurements, meteorological forecasts and computer models to determine the potential for flooding. RVCA staff can then estimate the severity, location, and timing of possible flooding and warn communities based on the four stages of the Flood Warning Index.

Our flood forecasting and warning system aims to reduce danger to people and property by providing as much advance notice and information as possible. Should flooding occur, the first response is up to you! As a property owner, you need an emergency plan to minimize flood-related property damages. If you don't have a plan, now's the time to make one – there are plenty of excellent resources online.

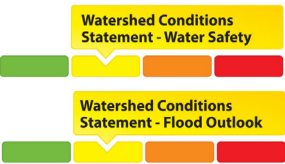
If the flood is beyond your capability, the Municipal Emergency Response Plan kicks in. Your municipality is responsible for emergency response services during severe floods. This is a good time to explore your municipality's website and familiarize yourself with its emergency preparedness plan. Have local emergency phone numbers handy!

To get up-to-date information on local watershed conditions, subscribe to RVCA's flood forecasting and warning emails at www.rvca.ca — look for "Get RVCA News." For more information contact BRIAN at brian.stratton@rvca.ca.

Flood Index



Normal — No flood conditions exist.



Awareness — Be informed and aware.

Water Safety Statements — High flows, unsafe banks, melting ice or other factors that could be dangerous for recreational users such as anglers, canoeists, hikers, children, pets, etc. Flooding is not expected.

Flood Outlook Statements — Early notice of the potential for flooding cased on weather forecasts calling for heavy rain, snow melt, high wind or other conditions that could lead to high runoff, cause ice jams, lake shore flooding or erosion.



Flood Watch — Be prepared to active your flood response plans if it becomes necessary. Flooding is possible in specific watercourses or municipalities. Municipalities, emergency services and individual landowners in flood-prone areas found prepare.



Flood Warning — Activate your flood response procedures now! Flooding is imminent or already occurring in specific watercourses or municipalities.

Interested in accessing real-time information on stream flows, water levels and snow measurements? Our interactive monitoring tool (maps and graphs) can be found online at www.rvca.ca/watershed-conditions.

Watch the Hutton Marsh Come Alive

The Hutton Marsh near Lombardy is in transformation, and now you can watch it happen! We've got exciting drone footage of the construction from winter 2020, and a glimpse of the new and improved marsh from last summer. Check out our new Hutton Marsh Restoration video on RVCA's YouTube channel @RideauValleyCA — and don't forget to subscribe! For more information contact DAN at dan.cooper@rvca.ca.



40,000 Trees to Find Forever Homes

An additional 40,000 trees will be added to our rural Ottawa planting schedule this spring thanks to a generous donation from One Tree Planted. This is the second year of support from the international tree planting charity. RVCA’s local program helps private landowners turn idle farm fields and other marginal land into thriving forests of the future, acting as windbreaks, erosion control, air purifiers and natural habitat. With support from partners like One Tree Planted and the Rideau Valley Conservation Foundation, RVCA offers highly affordable large-scale tree planting for landowners — just \$0.15 per tree. Got land? Plant trees! For more information contact IAN at ian.cochrane@rvca.ca.

Ice Safety Reminder

Think twice about ice! At any time throughout the season, ice thickness is unpredictable and can change quickly. The shorelines of lakes, rivers and creeks are especially slippery and pose serious hazards. Falling into open water can result in hypothermia or drowning. Please use extreme caution around all waterbodies by:

- Regularly testing ice thickness and staying off ice that may cover flowing water;
- Reminding children about the dangers of playing on or near ice-covered surfaces and open water;
- Keeping pets on leash near frozen water bodies.

The RVCA does not monitor or maintain ice conditions anywhere, including its 11 public

Ice Safety

Minimum Ice Depth

No ice is 100% safe

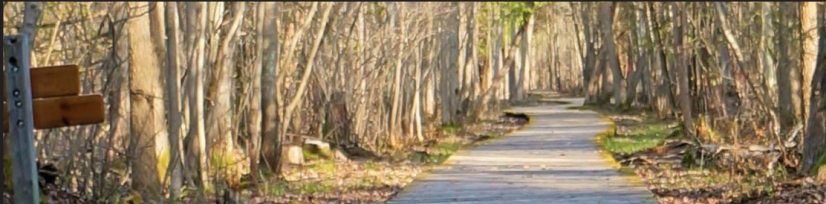
Activity	Minimum Ice Depth
Walking (stay off ice)	5 cm/2 in or less
One person and gear	7.5 cm/3 in
Group in single file	10 cm/4 in
Snowmobile or ATV	12 cm/5 in
One vehicle car or small pick-up truck	20-30 cm/8-12 in
One vehicle medium truck	30-38 cm/12-15 in

Based on solid blue lake ice. No ice is without some risk. Be sure to measure!

conservation areas. This includes the Rideau River and its tributaries, as well as the ponds, lakes and other bodies of water within our parks.

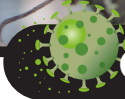
Donated Property a Welcome New Addition

A beautiful piece of Tay Valley shoreline will be preserved in perpetuity thanks to a generous land donation to the Rideau Valley Conservation Foundation. The 12-acre swath of forest and wetland beside a lake provides habitat for a wide variety of birds, mammals and aquatic life. The land is considered grey ratsnake territory, supporting an important species at risk in the Frontenac Arch biosphere. The Eastern wood-pewee, a species of special concern in Ontario, has also been spotted nearby. The RVCA and RVCF are thankful for this wonderful addition to our conservation lands. For more information contact DIANE at diane.downey@rvcf.ca.



Thank You For Your Support — We Are So Grateful!

In November, the RVCA was overwhelmed by the support we received from our member municipalities, community partners and watershed residents when the Province introduced changes to the *Conservation Authorities Act* through Bill 229, Schedule 6. We are so grateful to everyone who took the time to pass a resolution, write a letter or make a phone call and we are humbled by your commitment to the Rideau watershed. We are pleased to share that earlier this month, Minister Yurek appointed a Conservation Authority Working Group to provide feedback to the province on the implementation of the recent changes to the Act. The group has representatives from conservation authorities, municipalities, agriculture and the development sector. Their first task is to review the first phase of proposed regulatory changes that will be posted for public consultation later this month. RVCA’s General Manager, Sommer Casgrain-Robertson is on the Working Group and looks forward to working collaboratively with the province and the other members in the months ahead. For more information contact DIANE at diane.downey@rvca.ca.



COVID-19 Updates

Check out the latest RVCA COVID-19 information at www.rvca.ca/covid-19.

AROUND the Rideau is made possible thanks to our generous sponsors

Rideau Valley Conservation Authority
 Box 599, 3889 Rideau Valley Drive
 Manotick, ON K4M 1A5
 613-692-3571 or 1-800-267-3504
www.rvca.ca

- Facebook: [RideauValleyConservationAuthority](https://www.facebook.com/RideauValleyConservationAuthority)
- Twitter: [RideauValleyCA](https://twitter.com/RideauValleyCA)
- Instagram: [rideauvalleyca](https://www.instagram.com/rideauvalleyca)
- Youtube: [@RideauValleyCA](https://www.youtube.com/@RideauValleyCA)

Bell Baker, Barristers and Solicitors — 613-237-3444 | www.bellbaker.com
 Effectively providing quality legal services in Eastern Ontario for over 50 years

Bird Richard, Lawyers for Employers — 613-238-3772 | www.lawyersforemployers.ca | Representing management in labour and employment law across Ontario

Ramada Ottawa on the Rideau — 613-288-3500 | www.ramadaottawa.com
 Offers 87 fully renovated rooms with balconies overlooking the Rideau River, banquet facilities, full service restaurant and outdoor pool. Pet friendly.