



Chair's Message

The responsible care of our natural resources on a "watershed basis" is essential for balancing the needs of people against the needs of the environment in our valley. As caretakers of the watershed, the RVCA develops plans to promote and implement good environmental practices that protect, restore and maintain our natural resources.

We have a long history of working with agencies, landowners and other interest groups by planning and delivering sound environmental programs such as watershed monitoring, reforestation, providing advice and technical assistance, and private land stewardship service. 2004 was no exception as dedicated staff, motivated board members and our many volunteers have all demonstrated their commitment to the health of the watershed.

Early in 2004, the Government of Ontario announced over \$10 million would be directed to Conservation Authorities for Source Water Protection — to be delivered on a "watershed basis." CAs are one of the few agencies in the province to work on a watershed basis. The choice of CAs as Source Water Protection coordinators makes sense.

Special thanks to our General Manager and his staff, along with environmental partners who have made 2004 such a successful year. We look forward to working collectively to ensure the long-term health of the Rideau watershed.

John H. Miller, Chair

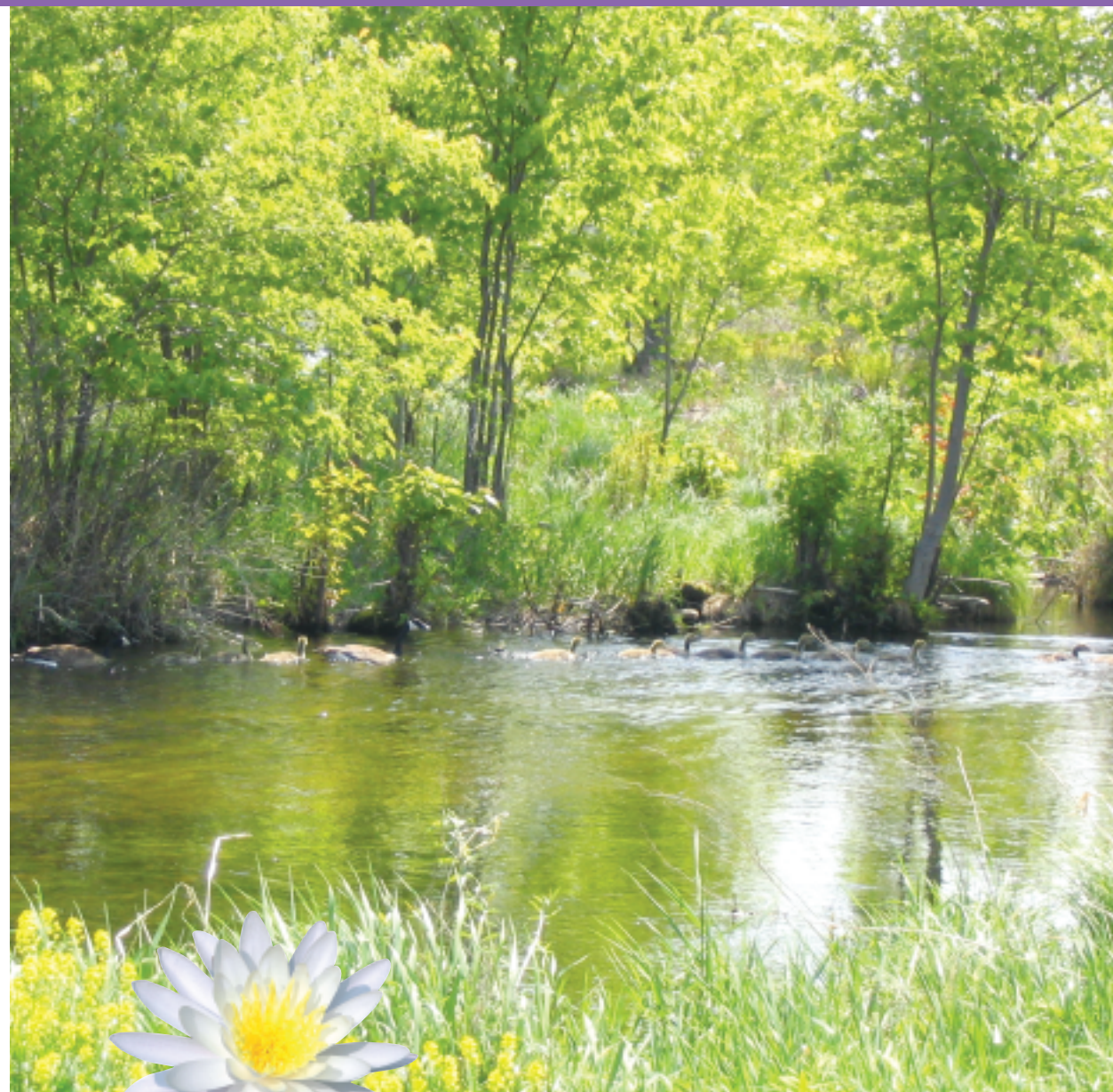
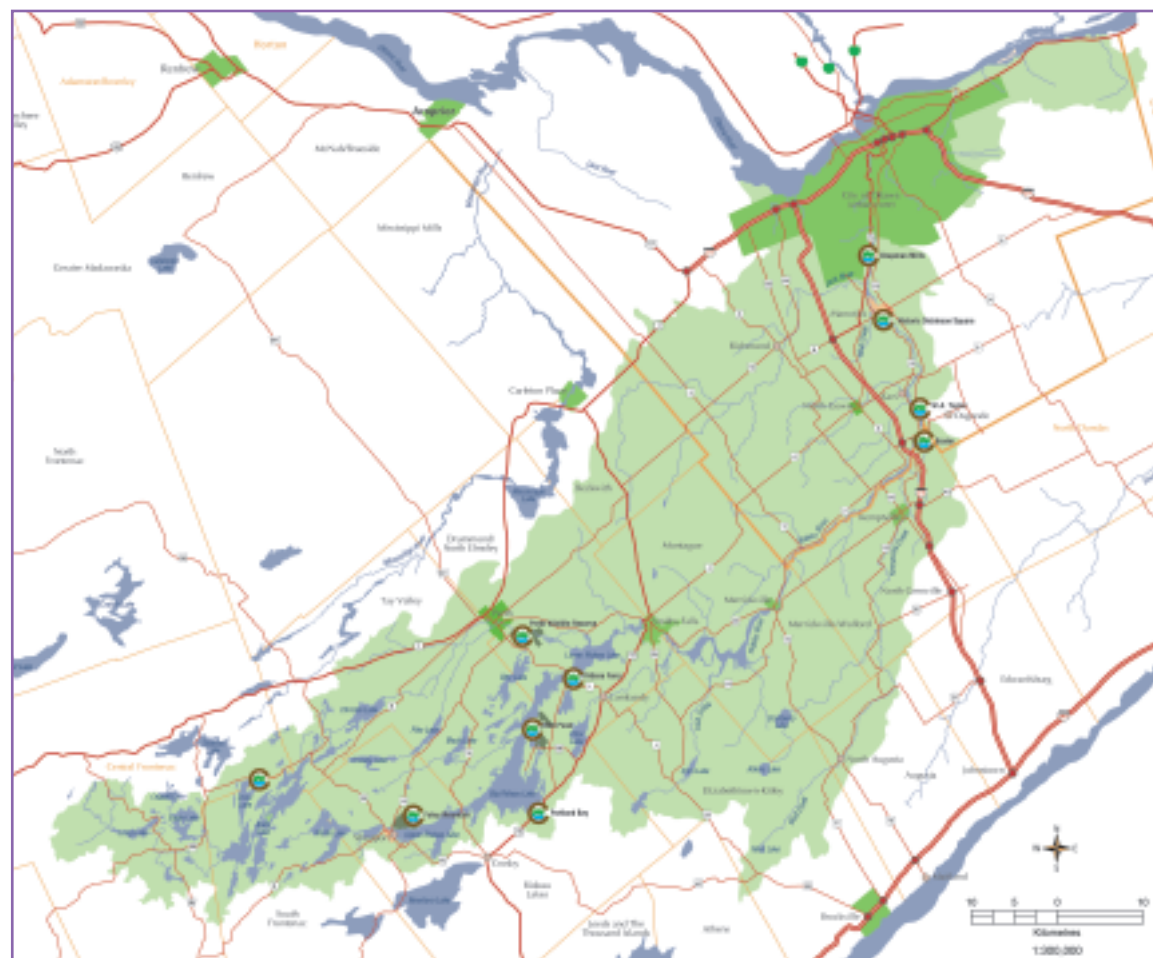
General Manager's Message

2004 was a year of expectations for the RVCA — for looking ahead and planning for the future.

We implemented Year Two of our Three-year Work Plan where our long-term goal is to maintain a healthy watershed by managing, protecting, monitoring and educating. Source Water Protection (SWP) funding was announced with Conservation Authorities being the main delivery agent. The Watershed Information System (WIS) was brought online early in the year, bringing valuable technical information to partners, agencies and the public. As well, the many monitoring programs underway provide continued valuable data to enhance our knowledge of the watershed and to assist in all aspects of managing it. A two-year project to build the first integrated computer model for the Rideau River is underway. New floodplain maps are being produced for the Jock River to assist in protecting people and property. Our Rural Clean Water Program continued to offer incentives, resulting in protecting and sustaining the natural resources in our watershed. In addition, our conservation areas continue to provide places for family recreation, education and peace and quiet.

Our success in 2004 is due in large part to the hard-working staff and volunteers. Their enthusiasm and dedication is much appreciated.

Dell Hallett, P.Eng., General Manager



RVCA Priorities

Understanding and Protecting our Watershed

The RVCA will take a coordinating role in Source Water Protection in our watershed alongside our environmental partners. The RVCA continues to monitor water resources across the watershed for everything from water quality to aquatic insect and precipitation. All information is posted on the Watershed Information System (WIS) which provides the most complete and current collection of technical information on watercourses in the Rideau watershed.

Making it Happen

RVCA's Three-year Work Plan and Strategy entered its second year continuing its goal of protecting and improving the Rideau Valley watershed. With a rigorous review of all current work programs, the Work Plan sets goals, priorities and deliverables to ensure environmental improvements and continued success for 2005 and beyond.

Municipal Environmental Services

Protecting the environment is a shared responsibility between both the landowner and the municipality. The RVCA works with our municipal partners to incorporate meaningful policies into the planning process through environmental services such as septic system approvals, flood forecasting and warning, reforestation, conservation information, plan review, fish and wildlife habitat protection and conservation land management.



Rideau Valley Conservation Foundation Board of Directors

John H. Miller, Chair
Janet Stavinga, Vice-Chair
Alan Arbuckle
Dwight Bennett
Stephen Bird
Jan Harder
Charles Long

Allan McCallum
Michael McEwen
Bill Stevenson
Wendy Stewart
Cathy Willoughby



How to Reach Us

Rideau Valley Conservation Authority
1128 Mill Street, Box 599
Manotick, Ontario, Canada K4M 1A5
Tel: (613) 692-3571
1-800-267-3504 (613 area only)
Fax: (613) 692-0831

postmaster@rideauvalley.on.ca



www.rideauvalley.on.ca



ANNUAL REPORT 2004

Rideau Valley Conservation Authority



www.rideauvalley.on.ca

Watershed management plays an important role in understanding the water cycle and characterizing surface and groundwater with regard to quantity, quality, and pathways for existing and potential contaminants — everything is connected to everything else.

*Walkerton Inquiry
Conservation Ontario*

Safe, clean drinking water is fundamental to the health and well being of Ontarians. Having an adequate supply of drinking water is also essential for strong, lasting, and prosperous communities.

*White Paper on
Watershed-based Source
Protection Planning
February 2004*



2004 RVCA Highlights

Watershed Planning, Monitoring and Reporting

- the Provincial Government announced that it would provide \$10 million for CAs and their partners to protect drinking water in Ontario for source water protection (SWP). The provinces White Paper on Watershed-Based Source Protection Planning was released in February and outlined a detailed, watershed-based approach to protecting people's health through safe drinking water sources. SWP dovetails with the RVCA's current three-year work plan, particularly in the development of hydrologic modeling capacity, implementation of recommendations in the regional groundwater studies and our Watershed Information System (WIS).
- WIS offers all sorts of environmental information for a wide range of watershed management activities. The initial version of this internet-accessible system was put into operation in early 2004. Refinements are ongoing.
- water quality monitoring is a fundamental part of RVCA's work. Water quality is sampled at many stream and lake locations in the watershed. The Provincial Water Quality Monitoring Network (PWQMN), RVCA's Baseline Monitoring Program and Watershed Watch are RVCA's main water quality sampling programs. To view water quality information, visit www.rideauvalley.on.ca.
- the Ontario Benthos Bio-monitoring Network continued at sites throughout the watershed. A total of 30 streams, nine lakes, and five wetlands were sampled. Bottom dwelling bugs (benthic invertebrates) were sampled to determine water quality and habitat quality. Two final reports will be available in the spring of 2005 that will summarize the results of the 2003 and 2004 sampling seasons. The data is available on WIS at www.rideauvalley.on.ca/watershed/surface_water_quality/benthic_overview.html
- water and flow levels in the Rideau watershed are monitored through RVCA's partnerships with Environment Canada, OMNR and Parks Canada.

Information gathered is used for flood forecasting and warning, low water response, and navigation. Monitoring provides low flow assessment and provides data for hydrologic/ hydraulic modeling.

Precipitation monitoring and the need for information on the amount of water falling in our watershed as rain or snow needs attention.

- information on quality and quantity of groundwater, measured by groundwater monitoring network stations (managed by MOE) is available through the WIS.
- the Ontario Stream Assessment Protocol was used at 12 sites in the Tay Watershed to assess physical habitat, water quality, water quantity and fish communities. Data gathered is entered into a provincial database which produces a summary available at www.rideauvalley.on.ca/watershed/aquatic_habitat/stream_overview.html.
- the RVCA's Macro Stream Assessment Program was used to survey 40 kilometres of the Tay River for land use, fish and wildlife, stream depth, widths, temperature, vegetation and other characteristics. A final report summarizing the 2004 data is available at www.rideauvalley.on.ca/watershed/aquatic_habitat/macrostream_overview.html.
- the City Stream Watch Program continued building on its success in 2004. The program is a partnership of six City of Ottawa community groups. The 2004 streams were Bilberry Creek, Monterey Creek, Mosquito Creek and Stillwater Creek. Volunteers record and manage valuable information on the characteristics of four streams and creeks in the City of Ottawa each year. Results for 2004 can be seen at www.rideauvalley.on.ca/zprograms/streamwatch/index.html.
- the Municipal Drain Classification Project continued to provide information to streamline drain maintenance and provide guidance on fish habitat sensitive municipal drains by developing a system of "drain classes."
- the Rideau River Shoreline Classification Project was completed. The purpose is to compile factual information that can be used to protect and restore natural shorelines using regulatory tools and stewardship incentive programs. Results are available at www.rideauvalley.on.ca/watershed/aquatic_habitat/shoreline_understanding.html.
- RVCA began an intensive two-year project to build the first integrated computer model for the entire Rideau River watershed (MIKE 11 river modeling

- software). Plans are to have it fully operational by December 2005. Using state-of-art computer software, a model will be developed that includes the Rideau, Tay, and Jock Rivers as well as Kemptville Creek. The model will assist in many areas of RVCA work, such as SWP, water budget, flood risk forecasting, identification of key hydrologic process and features and their importance to the watershed.
- new Jock River flood plain maps were produced using recent data and advanced engineering methods. Final adjustments and checking of the maps based on comments submitted at open houses were completed with final mapping to be delivered early in 2005. These maps are a big step in the protection of people and property against flooding.
- Haggart Island Dams Rehabilitation Feasibility Study was kicked off in 2004 and completed by late fall. It confirmed that the existing structures are at the end of their useful service life and are beyond repair and should be replaced. Final design and documentation for environmental assessment purposes is to be completed during 2005.
- a report on the condition of water control and erosion control structures built under the Graham Creek Flood and Erosion Control Program was completed in mid-2004. It was found that, despite the deteriorating condition of some of the older structures, the system performed as required during flood events.

Stewardship Services

- 140,000 tree seedlings were planted in 2004. Forestry staff assisted landowners with free site visits to discuss landowner objectives and to prepare planting plans. Reforestation efforts will bring the total number of trees planted through the RVCA to 2.65 million over the past 21 years. Trees are being planted for erosion protection, windbreaks, connecting fragmented forest, stream and riverbank rehabilitation, and to establish forest cover on idle or marginal land. RVCA's tree planting is made possible with the support of our many partners.
- Tree Canada Foundation certified the Monterey Inn Resort, nestled on the banks of the Rideau River, as Canada's first "carbon neutral" company. The Foundation calculated the Inn's carbon output (heating, electricity and the commuting of its employees) and had the RVCA plant 5,500 trees to offset the carbon produced.
- the LRC is the RVCA's friendly front-end customer service centre providing accurate, impartial, user-friendly information on a variety of

- environmental topics. There were over 3,000 phone calls and nearly 1,500 walk-in clients in 2004.
- now in its third year, the Rideau Valley Rural Clean Water Program (RVRCWP) continued to offer financial incentives to farmers and rural property owners to undertake projects to protect and improve water quality along the Rideau and its tributaries. A total of 72 projects at a cost of \$275,000 (including landowner share) were undertaken in 2004. A new brochure was produced with sponsorship from TD Friends of the Environment and our good friends at Ottawa Dragon Boat Race Festival, Tomlinson, Kemptville Truck Centre, OMYA, AON, Golder Associates and Lanark County Stewardship offered assistance to fund projects in the community to safeguard our water. Transition discussions regarding Conservation Authorities delivering the City of Ottawa's Clean Water Project are underway.

Conservation Lands Program

- the Community Foundation of Greater Kingston awarded a grant to construct a bridge on the Sandi Slater Memorial Walk at Meisel Woods Conservation Area near Crow Lake. This gift kick-started a fund raising effort to complete the entire five kilometre natural trail around Beaver Lake.
- Baxter Conservation Area has received major funding from the following two groups to upgrade the interpretive facilities and program potential: As part of their Healthy Wetlands-Healthy Communities initiative, Ducks Unlimited Canada, in partnership with Ontario Ministry of Natural Resources, has funded the development of a wetland lookout, education platform, additional boardwalks, two composting outhouses and interpretive signage.
- The Kiwanis Club of Manotick, through the Ontario Trillium Foundation, has provided for the development of an observation deck, interpretive signage and additional boardwalks on the trails.
- started in May 2004, thirty-four conservation land property maps were completed as well as updating the RVCA Landholdings map showing the RVCA and RVCF property locations. We also acquired an Ottawa photography layer, and ortho-rectified and geo-referenced colour infrared aerial photography for properties outside Ottawa.
- Baxter Conservation Area's Education Programs continue to be attractive to school groups, Scouting and Guiding groups and Day Camps. 2004 saw some 6,400 student-day participants in all our programs.

- the Eastern Ontario Children's Water Festival and Ducks Unlimited Canada's Project Webfoot are annual highlights and provide hands-on learning about water and wetlands to over 1,500 Grade 4 students.
- Foley Mountain Education Programs helped over 3,000 local kids understand their natural world. The Friends of Foley Mountain had another successful fund-raising year.
- the Wetland Prioritization Project was started in 2004 to assist RVCA with its planning and regulation duties and management of conservation lands. Once complete, it will give an inventory of all OMNR evaluated wetlands within the Rideau watershed. A final report is expected for spring 2005.

Planning and Regulations

- application numbers rose from previous years because of increasing development activity throughout the watershed.
- 2004 was the first full year of Rideau Valley, South Nation and Mississippi Valley Conservation Authorities agreement to provide expert technical review services to the City of Ottawa.

- The three CAs provided watershed-based centres of excellence to assist member municipalities make sound environmental decisions to protect people, property and the environment.
- technical reviews for *Planning Act* development applications continued with over 1,000 applications reviewed. As well, staff improved the existing database to better manage day-to-day activities and continue providing excellent planning advice.
- there were 215 applications processed under the *Fill, Construction and Alteration to Waterways Regulation*.
- reviews on Section 35 of the federal Fisheries Act ensure that development on the Rideau did not harm, alter, destroy or disturb fish habitat.
- The Ontario Legislature approved Regulation 97/04, a new "Development, Interference with Wetlands and Alterations to Shorelines and Watercourses" regulation (also known as the Generic Regulation) in early 2004. RVCA began concerted internal activities to bring the existing regulatory program and mapping to conform to the new regulation.

Financial Conservation

2004 Revenues

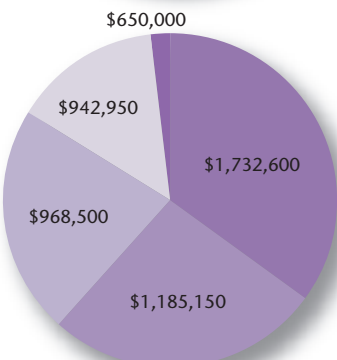
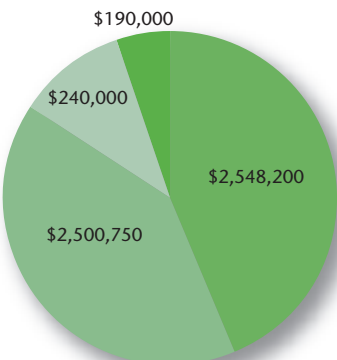
Municipal Levy\$2,548,200
Program Revenue\$2,500,750
Special Levies\$190,000
Government Grants\$240,000

TOTAL\$5,478,950

2004 Expenditures

Watershed Planning, Monitoring & Reporting\$1,732,600
Planning, Advisory & Regulatory Services\$1,185,150
Stewardship Services\$968,500
Conservation Land Management Services\$650,000
Corporate Services\$942,700

TOTAL\$5,478,950



Partners in Conservation

Agricultural Adaptation Council
Agriculture and Agri-Food Canada
Alliance of Rideau Lakes Associations
Bell Baker, Barristers and Solicitors
Canada Lands Company
Canadian Museum of Nature
Chawkers Foundation
Christie Lake Association
CH2MHILL CANADA Limited
Collège d'Alfred (University of Guelph)
Community Foundation of Greater Kingston
Community Foundation of Ottawa
Conservation Ontario
Crosby and Little Crosby Lake Association
Davern Lake Association
Department of Fisheries and Oceans Canada
Ducks Unlimited
Eagle Lake Association
Eastern Chapter, Society of Ontario Nut Growers
Eastern Ontario Biodiversity Museum
Eastern Ontario Model Forest
ECOS (Environment Committee of Ottawa South)
Enbridge Consumers Gas Co. Ltd.
Energy Pathways Inc. (ON-SITE Program)
Environmental Farm Plan
Farren Lake Association
FENDOR Glass & Aluminum (FENDOCK)
Friends of Baxter Conservation Area
Friends of Foley Mountain
Friends of the Jock River
Friends of the Rideau
Friends of Perth Wildlife Reserve
Friends of the Tay Watershed
Friends of Upper Duck Island
Golder Associates
Great Lakes Aquatic Network & Fund
Greater Bob's and Crow Lakes Association
Harold Crabtree Foundation
Healthy Future for Ontario Agriculture
Helen McCrea Peacock Foundation
Human Resources Development Canada
Kemptville Truck Centre
Kinsmen Club of Manotick and District
Kinsmen Club of Rideau Lakes
Lanark County Federation of Agriculture
Lanark County Community Stewardship Council
Lanark Leeds Green Community
Leads County Community Stewardship Council
Little Silver Lake Property Owners Association
Living by Water Project
Manotick Horticultural Society
Manotick Kiwanis Club
McConnell Family Foundation (Living by Water)

Minto Developments Inc.
Monarch Homes
Monterey Inn & Resort
Mountain Equipment Co-op
MAPLE (Mutual Association for the Protection of Lake Environment Inc.)
OMYA (Canada) Inc.
Ontario Farm Environmental Coalition
Ontario Federation of Agriculture
Ontario Ministry of Agriculture, Food and Rural Affairs
Ontario Ministry of the Environment (Ottawa District, Southeast Region, Provincial Groundwater Monitoring Network)
Ontario Ministry of Municipal Affairs and Housing
Ontario Ministry of Natural Resources (Kemptonville, Kingston, Peterborough; Aviation, Flood & Fire Service)
Ontario On-Site Wastewater Association
Ontario Rural Wastewater Centre
Ontario Power Generation
Ontario Soil & Crop Improvement Association
Ontario Summer Experience Program
Ontario Trillium Foundation
Ottawa Dragon Boat Race Festival
Ottawa Stewardship Council
Otty Lake Association
Parks Canada, Rideau Canal Office
Pratt & Whitney (Canada)
Pike Lake Cottage Association
Renfrew County Stewardship Council
Rideau Environmental Action League (REAL)
Rideau Lakes and District Kinsman Club
Rideau Roundtable
Rideau Valley Conservation Foundation
Rideau Waterway Land Trust Foundation
Robinson Consultants Inc.
Robinson's Your Independent Grocer, Manotick
Royal Bank of Canada
Ruffed Grouse Society
R.W. Tomlinson Ltd.
Shell Canada Limited
Simmering & Associates Ltd.
South Nepean Development Corporation
St. Joseph Print Group
Summer Job Service
Sunoco and the Suncor Energy Foundation
TD Canada Trust Friends of the Environment Foundation
The Base Mapping Co. Ltd.
Trailhead
TransCanada PipeLines
Tree Canada Foundation
Upper Rideau Lake Association
Unilever-Evergreen Foundation
University of Guelph
University of Ottawa
URBANDALE
Watson's Mill Manotick Inc.
Wetland Habitat Fund
Wildlife Habitat Canada

Rideau Valley Conservation Foundation Board of Directors

Mark Andrews
Bryan Baker
Mary A. Bryden (Chair)
Lesley I. Cameron
Donrey Anne Hamilton
Dorothy Hearty
Lynn Kaplansky
Pat MacGregor (Secretary-Treasurer)
Ralph Raina
Stephen Simmering (Vice Chair)
Mary Surtees

Charles Billington, Executive Director

Rideau Valley Conservation Foundation

The Rideau Valley Conservation Foundation is a registered environmental charity run by a eleven-member volunteer Board of Directors. Their goal is to conserve and protect the Rideau River and its watershed. The Foundation raised over \$154,000 in 2004 for on-the-ground projects in the watershed through generous gifts from by donors including Monarch Homes, Tomlinson, The McGarry Family, Pratt & Whitney (Canada) and hundreds of caring families and individuals. The Foundation is thrilled to be one of the four charities of the Ottawa Dragon Boat Festival for 2004 and 2005.

The Foundation publicly acknowledges the generosity and vision of donors to conservation in 2004. Hats off to the hard-working team at the Rideau Valley Conservation Foundation for contributing to the sustainable future of the Rideau Valley.

For more information on the Rideau Valley Conservation Foundation, visit our website at www.rideauvalley.on.ca/foundation.

