



RIDEAU VALLEY
CONSERVATION AUTHORITY
Annual Report

2012



2012 RVCA Board of Directors

| | |
|-------------------------------|---------------------|
| Athens | Andy Jozefowicz |
| Augusta | Lee Armstrong |
| Beckwith | Sharon Mousseau |
| Central Frontenac | Tom Dewey |
| Clarence-Rockland | Vacant |
| Drummond/North Elmsley | Ray Scissons |
| Elizabethtown-Kitley | Lyle Pederson |
| Merrickville-Wolford | Jim Anderton |
| Montague | Vince Carroll |
| North Dundas | Gerry Boyce |
| North Grenville | Barclay Cormack |
| Perth | David Crowley |
| Rideau Lakes | Rob Dunfield |
| Smiths Falls | Ken Graham, Chair |
| South Frontenac | Mark Tinlin |
| Tay Valley | John H. Miller |
| Westport | Bradley Wing |
| City of Ottawa | Alan Arbuckle |
| | David Chernushenko |
| | Steve Curtis |
| | Steve Desroches |
| | Ed Hand, Vice-Chair |
| | Magda Kubasiewicz |



Rideau River at
Chapman Mills
Conservation Area

Cover photo and all
photos this page —
Simon Lunn



What We Do

The RVCA delivers services to manage water and other natural resources. These efforts are done in partnership with municipal, provincial and federal governments, landowners and other like-minded organizations — all at a shared cost well below what they would pay on their own. The RVCA promotes an integrated watershed approach — one that balances human, environmental and economic needs.

We aim to:

- improve water quality
- protect water supplies
- reduce flood risk and erosion hazards
- improve watershed habitats
- increase conservation lands

Message from our Chair and General Manager

For the past 46 years, the RVCA and its many like-minded partners have been diligently working to protect and enhance our local “green infrastructure.” It is becoming increasingly clear that the work we do to protect our environment is not an option, but rather a necessity. We can not afford to choose between our economy and our environment. The two are too closely bound. Instead, we must recognize that today’s investment will ensure a sustainable future — one where healthy human communities are part of vibrant natural communities.

At the RVCA, every \$1 from our member municipalities translates into \$2 invested in the Rideau watershed. Impressive value-added efforts are being achieved on behalf of our watershed residents through Conservation Authority work — work that could not be achieved working alone. It is our creative partnerships that make us stronger — our willingness to work with landowners, businesses, special interest groups and municipal, provincial and federal agencies. RVCA is finding creative ways to support valuable programs and products — all with the goal of protecting the natural process on which wildlife, communities and economies depend.

It is hard to express the economic benefits we achieve locally through our work — cleaner water, improved tourism, reduced flooding. Harder still is to put a value on the simple pleasures of a dip in the cool, clean water at Baxter Beach or a child’s first glimpse of a red-backed salamander at Foley Mountain.

The RCVA will continue protecting our natural water ecosystems. We will continue to promote the value of our green infrastructure — seeing value in what is provided free of charge by the environment — not through costly man-made infrastructure. By protecting our ecosystems, our communities are healthier and more sustainable with clean air and clean water.

At this time we wish to thank our municipalities, members, partners and staff for their dedication and support. We are also very appreciative of the continuous, enthusiastic efforts of our volunteers. Together, we continue to move forward and reach our goals for a healthy Rideau watershed.

While we look forward to another promising year ahead, we are proud of our achievements over the past year. This report details those accomplishments.

Ken Graham, RVCA Chair

Dell Hallett, RVCA General Manager

For a more complete picture of our ongoing work — including a list of staff and our many programs and services — please visit our website at www.rvca.ca. You can also keep informed by liking us on Facebook or following us on Twitter (@RideauValleyCA).



Conservation Land Services

- **\$110,000** in donations were raised in partnership with RVCF to offset land acquisition, conservation area development and stewardship activities
- **60,000** visitors to Rideau Valley Conservation Areas
- **5,000** students enjoyed Baxter's Outdoor Education Programs
- **2,760** hectares of conservation land including **33** natural areas, **9** developed Conservation Areas and **11** management agreements are operated, maintained and serviced
- **2,400** people rented the facilities at Foley Mountain and Baxter Conservation Areas' Interpretive Centres, Baxter River Cabin and group camping areas
- **2,000** people enjoyed Foley Mountain's year-round education and summer programs
- **800** children received in-school Spring Water Awareness Programming
- **575** square feet of new platform installed for a lookout
- **550** trees planted at three conservation areas
- **277** hazardous trees removed in public areas
- **250** children enjoyed Summer Day Camp at Baxter and Foley Mountain
- **200** children participated in Foley's Children's Water Festivals
- **49** acres of newly acquired conservation land — protecting important wetland and shoreline
- **39** kilometres of trails maintained for public access
- **9** solar panels installed on two conservation area facilities
- **6.5** kilometres of hiking trails and access routes upgraded at three conservation areas
- **6** Conservation Lands Management Plans developed
- **3** boat launch upgrades
- **2** buildings renovated/refurbished as part of ongoing capital infrastructure improvements



Chapman Mills Conservation Area

Our trees at work

4,000,000 trees planted = 121,564,000 kg carbon absorbed and 2,176,000 kg of oxygen produced.





City Stream Watch and Rideau Valley Rural Clean Water Programs celebrated 10 years of success

City Stream Watch — 23 creeks surveyed, 146 fish sampling events, 25 riparian planting events, +10,900 native trees and shrubs planted, +1,300 volunteers and 9,000 volunteer hours invested in local streams

Rideau Valley Rural Clean Water Program — 564 projects, \$770,559 grants, \$3,186,984 project value



Photo: Simon Lunn



Stewardship Services

Shoreline Naturalization Program

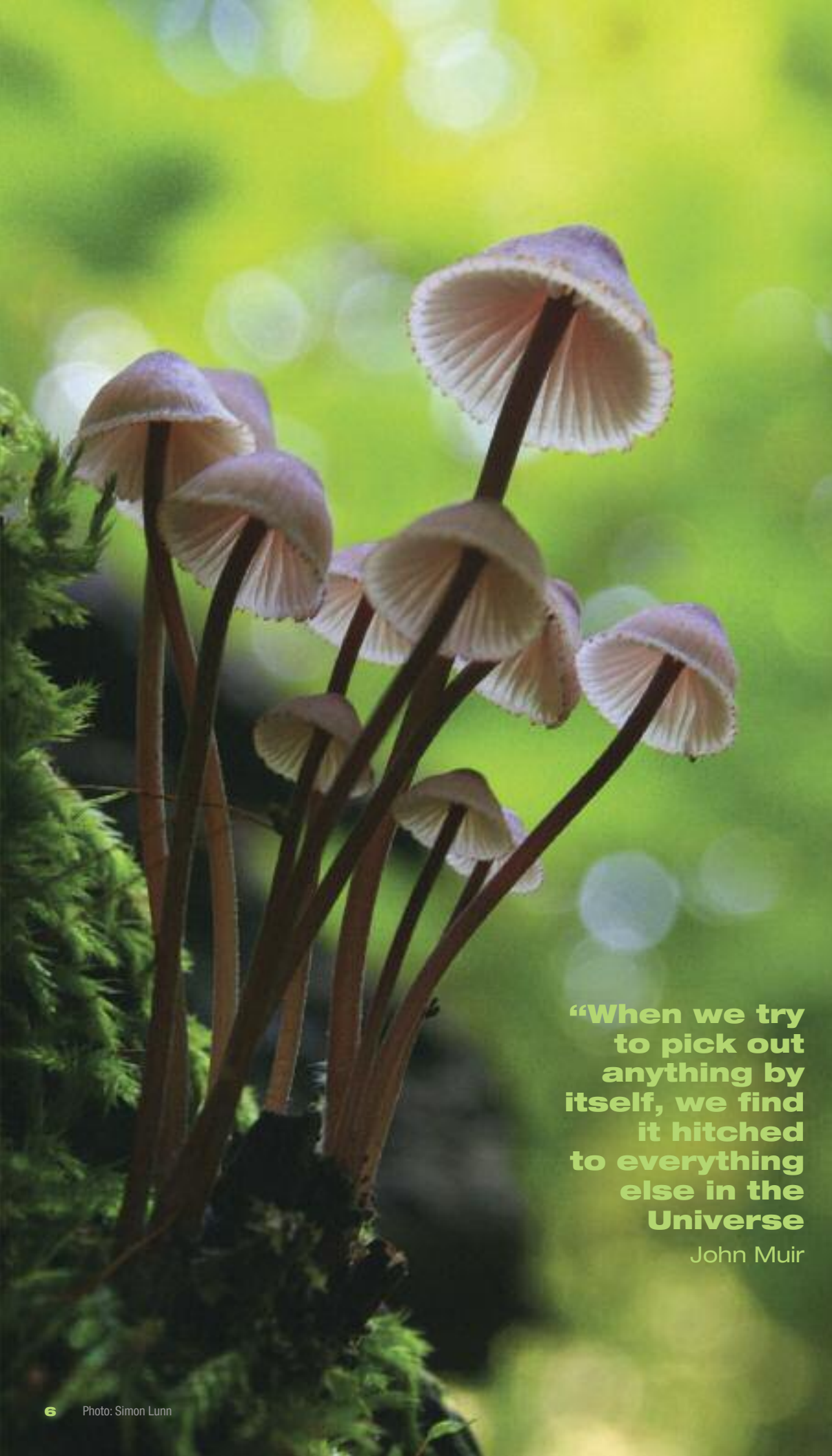
- **13,046** native plants planted including **1,358** potted plants
- **767** volunteer hours given by **312** volunteers (in partnership with City Stream Watch)
- **43** shoreline naturalization projects completed through the Shoreline Naturalization Program — **\$65,324** total project value; **\$153,650** external fundraising
- **3.84** kilometres of shoreline naturalized

Private Land Forestry

- **4.4** million trees planted since 1984
- **\$276,497** in fundraised (non-landowner, non-levy) money to help offset planting costs for landowners; **\$481,900** in total project value
- **232,900** trees planted in 2012 (highest number since 1992)

Clean Water Programs

- **60** projects were approved through the Rideau Valley Rural Clean Water Program, allocating **\$103,226**; **48** of these approved projects were completed; total grants of \$63,025 to projects valued at **\$421,761**
- **32** projects were approved through the Ottawa Rural Clean Water Grants Program, allocating **\$110,268**; **27** of these approved projects were completed; total grants of **\$70,054** to projects valued at **\$325,188**
- **11** projects were approved through Ontario Drinking Water Stewardship Program in the Mississippi-Rideau Source Protection Region, allocating \$48,954; **10** of these approved projects were completed; total grants of **\$29,066** to projects valued at **\$80,468**



**“When we try
to pick out
anything by
itself, we find
it hitched
to everything
else in the
Universe**

John Muir



Photo: Simon Lunn



Planning and Regulations

Planning Advisory Activity

- **525** consent to sever
- **410** minor variances
- **131** site plan control applications
- **128** zoning by-law amendments
- **20** condominium applications
- **12** official plan amendments
- **12** subdivision applications
- **7** environmental assessment comments for MOE Permits to Take Water
- **3** comprehensive zoning by-laws
- **1** official plan review

Section 28 Conservation Authorities Act

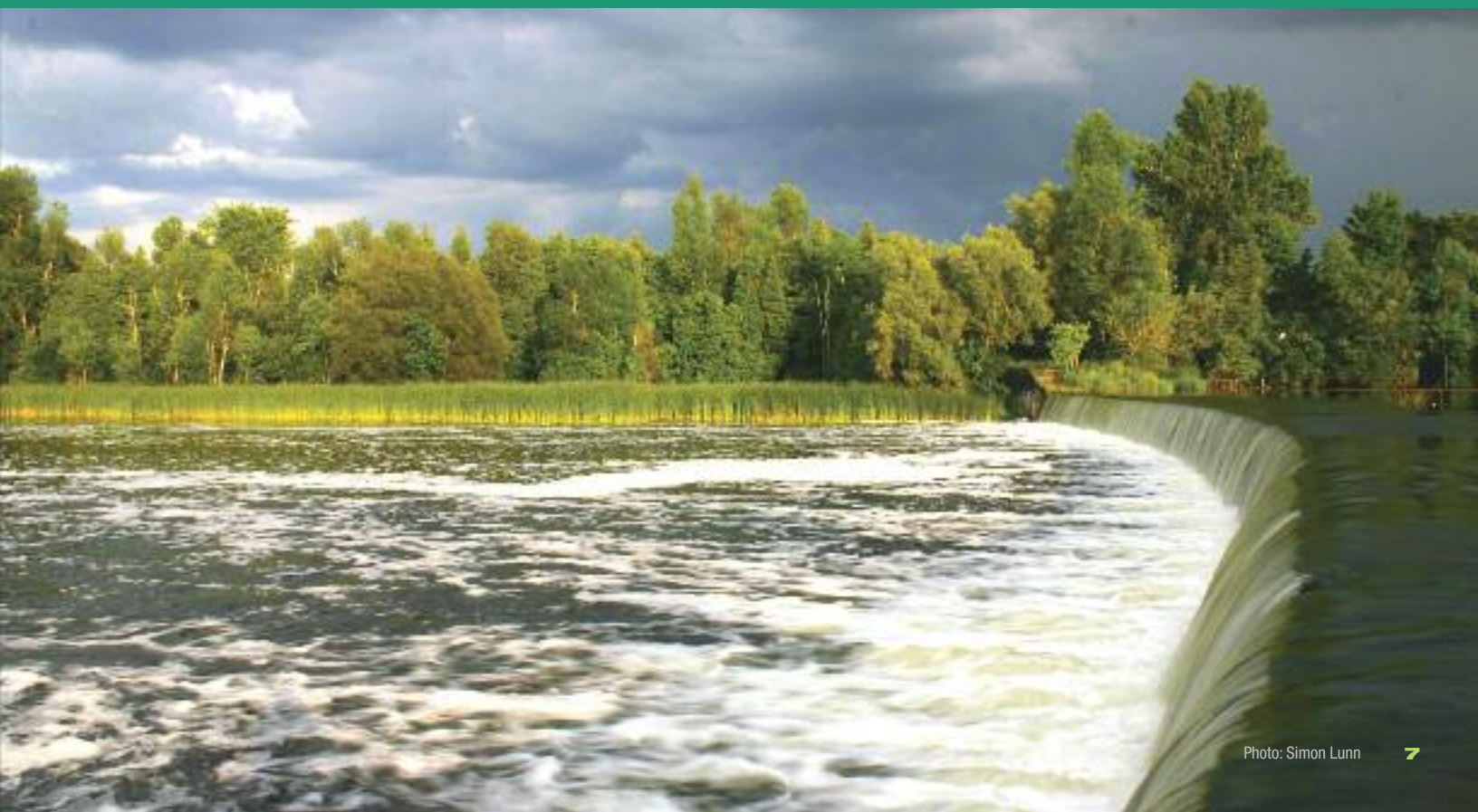
(Development, Interference with Wetlands and Alterations Activity)

- **301** applications received — **264** approved, **34** on hold, **2** withdrawn, **2** denied, **19** violations, **12** violations resolved
- **646** general inquiries made concerning regulations
- **221** written responses on property transactions/legal inquiries
- **71** per cent of applications within the City of Ottawa political boundary

- **50** per cent of all applications on Rideau River between Smiths Falls and Rideau Falls
- **49** per cent of all applications related to “development” on Hazard Lands, **46** per cent related to “alteration to waterway” and **5** per cent of all applications related to “wetland interference”
- **15** per cent of all applications on Ottawa River and tributaries
- **112** Section 35 *Fisheries Act* reviews

Septic System Approvals

- **600** Part 8 Septic applications for new or replacement septic systems in Ottawa through Ottawa Septic System Office (OSSO)
- **68** Part 10 — Renovation applications, **62** Part 11 — Occurrence Reports, **10** demolition applications and **251** file search requests through the OSSO
- **350** septic re-inspections completed by the Mississippi-Rideau Septic System Office (MRSSO) in Drummond/North Elmsley (**19**), North Frontenac Township (**40**), Rideau Lakes Township (**78**) and Tay Valley Township (**213**)
- **92** applications for **75** new and **17** replacement systems in Tay Valley Township through the MRSSO





All photos
this page and
opposite page
— Simon Lunn

Watershed Science and Engineering Services

- Completed the flood level determination for the Upper Rideau Lake
- Completed flood mapping of Cardinal Creek
- Collected digital elevation model for the Middle Rideau River
- Wrapping up Tay River flood mapping project
- Initiated flood mapping program in the City of Ottawa; study areas for 2013 are the Ottawa River, Rideau River and Monahan Drain
- Mike11 model for the Tay Basin was thoroughly updated
- On-going development of a science-based decommissioning and river rehabilitation project at Hearts Desire Weir on the Jock River
- Renewed Provincial Groundwater Monitoring Network Program partnership agreement with the Ministry of the Environment
- Surveyed Irish Creek and the Tay River for beaver dams
- Provided municipal drain classification update to each municipality which included maps and data
- Partnered with other resource agencies to host a Lake Links Workshop to inform and educate lake dwellers about Climate Change and Climate Change Adaptation Strategies
- Published the *Tay River Subwatershed Report* and associated catchment reports
- With partners, prepared the *Hutton Creek Wetland Restoration and Management Plan*
- **1,162** hours from **194** volunteers invested in Ottawa's City Stream Watch program; Mud Creek (tributary of Greens Creek), Black Creek (tributary of Greens Creek), Nepean Creek, Taylor Creek, Ottawa East tributary were sampled in 2012
- **360** hours donated by **25+** lake steward volunteers to help monitor and sample Watershed Watch Lakes
- **60** sites throughout the watershed monitored for effects of low water on aquatic habitat in July and August
- **55** sites sampled for the RVCA Baseline Monitoring Program which monitors the water chemistry on major tributary streams each month from April to November
- **50** headwater feature sampling locations in Rideau Lakes subwatershed in the spring and summer, **13** sites on the 2012 City Stream Watch creeks
- **42** stream sites (spring and fall) and 15 lake (spring) sites sampled for water quality conditions using the Ontario Benthos Biomonitoring Network methodology (biology)
- **39** lakes monitored **3** times each from May to November to sample nutrients, *E. coli* and key physical parameters through the Watershed Watch Program
- **31** sampling events on Mud Creek (tributary of Greens Creek) Black Creek (tributary of Greens Creek), Nepean Creek, Taylor Creek, Ottawa East tributary fish community using various methods (electrofishing)
- **19** water loggers have been installed along various rivers and lakes and are collecting data
- **19** OSAP sites in Rideau lakes subwatershed for channel morphology, benthic invertebrates, fish community, thermal regime
- **16** fish sampling sites on Barr, Sicklers and Adrains Creeks
- **16** monitoring wells collecting hourly water levels and manual monthly water levels
- **15** sites sampled in the Biocriteria Project which studies invertebrates, and fish
- **11** water temperature probes installed on Mud Creek (tributary of Greens), Black Creek (tributary of Greens), Nepean Creek, Taylor Creek, Ottawa East tributary
- **6** water temperature probes installed on Barr, Sicklers and Adrains Creeks in Rideau Lakes subwatershed
- **6** stream cleanups on Taylor, Sawmill, Graham and Greens Creeks (**3.5** kilometres of streams cleaned)
- **2** watershed condition statements and 10 low water related statements
- **3** invasive species removals on Graham, Stillwater and Greens Creeks
- **3** demonstration events (Ultimate Aquatic Workshop, **2** benthic invertebrate and fish sampling demonstrations for volunteers)
- **1** bioengineering project completed at Graham Creek

Source Water Protection

In 2010, valuable technical work was completed showing us where our local drinking water comes from and where we need to protect it. Throughout 2011, the Source Protection Committee worked closely with all municipalities, industry sectors, impacted property owners and the public to draft policies that will help keep contaminants out of these local sources of drinking water. Strong policies will protect sources of municipal drinking water while softer policies will help protect regional groundwater. The policies, compiled into a Source Protection Plan, were completed in July 2012 and submitted to the MOE for approval. This work was done under the *Clean Water Act* and was funded by the province (2012 value was **\$601,000** for the Mississippi and Rideau watersheds).



Financing Conservation (unaudited)

2012 Expenses



| | |
|--|--------------------|
| Watershed Science and Engineering Services | \$2,866,187 |
| Planning Advisory and Regulations Services | \$1,600,036 |
| Stewardship Services | \$1,574,987 |
| Conservation Land Management Services | \$999,208 |
| Corporate Services | \$818,693 |
| Capital | \$353,001 |
| Total | \$8,212,112 |

2012 Revenue



| | |
|-------------------|--------------------|
| Municipal Levy | \$4,589,000 |
| Program Revenue | \$2,340,768 |
| Provincial Grants | \$978,178 |
| Special Levy | \$526,112 |
| Total | \$8,434,058 |





RIDEAU VALLEY CONSERVATION FOUNDATION

2012 RVCF Board of Directors

- Mark Andrews
- Bryan Baker
- Mary A. Bryden, Vice Chair
- Angela Deguire,
Secretary-Treasurer
- Andrew Harkness
- Dorothy Hearty
- Lynn Kaplansky
- Jason W.M. Kelly, Chair
- Michael Lascelles
- Patricia MacGregor
- Anne Simmering
- Robert E. Smith
- Donrey Anne Tirado
- Rich Wilson

We are a local, accountable, registered environmental charity dedicated to supporting on-the-ground conservation projects right here in the valley of our own Rideau River. For the comfort and confidence of our many donors, the Conservation Foundation is a proud member of Imagine Canada's Ethical Code Program and the Ontario and Canada Land Trust Alliances. These respected Canadian philanthropic groups provide training, guidance and certification in fair accounting, fundraising and land acquisition practices.

We have three main areas of interest called RiverCare, LandCare and Land Donations. The LandCare program was particularly active again in 2012.

It is a pleasure to acknowledge and thank the many hundreds of generous and community-minded people who made a gift to conservation in 2012. The Board sincerely appreciates their continuing confidence in our programs.

Highlights for 2012

- we are fortunate to have the confidence of several land development groups in the watershed who used our Species at Risk program to compensate for the unavoidable loss of Butternut or Bobolink during their business activities
- we were honoured with the continuing support of 25 local businesses all of whom are recognized on the famous Partners in Conservation donor wall in the Rideau Valley Conservation Centre in Manotick
- we participated in our first-ever and very successful Rain Barrel Sale in cooperation with our neighbours, the Canadian Guide Dogs for the Blind in Manotick (so successful that we are planning three for 2013)
- we were proud to join with planting and funding partners to help plant over 225,000 trees this year
- we were very pleased to help make six events carbon neutral in the valley in 2012 including a golf tournament and two weddings
- we were honoured to help jumpstart the long-awaited Hutton Marsh Restoration Project in Elizabethtown-Kitley Township with a huge gift from the South Kanata Development Corporation

Rob Durie from Frogbox making his first annual donation to help improve aquatic habitat in the Rideau Valley (spring 2012).



Photo: Simon Lunn



Photo: Simon Lunn



Molson Coors Community Cheer



Memorial Bench Program

- we launched the Memorial Bench Program in the Rideau Valley whereby people can commemorate the loss of a family member or friend with the installation of a plaqued bench in one of our eight developed conservation areas
- we participated for the first time in online cheering or voting for funding projects and were successful with MOLSON COORS COMMUNITY CHEER and the SHELL FUELLING CHANGE programs
- the Board would like to thank the staff and Board of the Rideau Valley Conservation Authority for all of their generous support and encouragement in 2012; we are honoured to recognize RVCA is our biggest supporter and our major conservation partner
- we have been so honoured with generous gifts over the past ten years that a new category of donor called "PATRONS", was established on the Partners in Conservation Donor Wall honouring (so far) six individuals and groups who have donated over \$100,000 to conservation
- and thanks to the generosity of the people of the Rideau Valley, the Foundation again surpassed our fundraising goal in 2012

Love this beautiful, old valley like we do? We would be pleased to talk to you about a gift to conservation whether of property, funds or in-kind services ... please call or write for confidential advice and opportunities.

P.O. Box 988, 3889 Rideau Valley Drive, Manotick ON K4M 1A8

Tel: 613-692-3571 ext. 1116 or 1-800-267-3504 ext. 1116

Fax: 613-692-0831

info@rvca.ca | www.rvca.ca

How to reach us

Rideau Valley Conservation Authority
3889 Rideau Valley Drive, P.O. Box 599
Manotick ON K4M 1A5

Tel. 613-692-3571
Fax. 613-692-0831

postmaster@rvca.ca
www.rvca.ca

Like us on Facebook
Follow us on Twitter



© Rideau Valley Conservation Authority
February 2013
Printed on recycled paper



Photo: Simon Lunn