

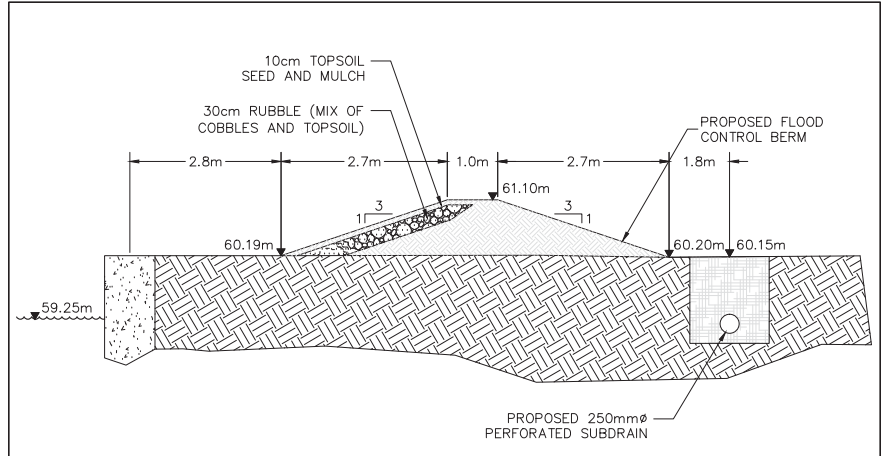
**BRITANNIA VILLAGE
FLOOD CONTROL**

Contract No.	Dwg. No.
	100
Sheet	1 of 4
Asset No.	
Asset Group	ISD
Des.	Chk'd.
Dwn.	Chk'd.
Utility Circ. No.	Index No.
Const. Inspector:	
SCALE 1:250	
0 1 5 10	

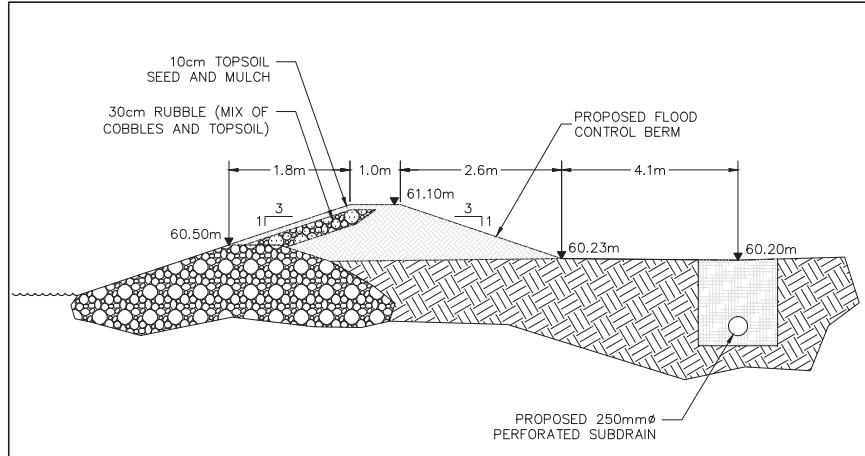


NOTE: The location of utilities is approximate only, the exact location should be determined by consulting the municipal authorities and utility companies concerned. The contractor shall prove the location of utilities and shall be responsible for adequate protection from damage.

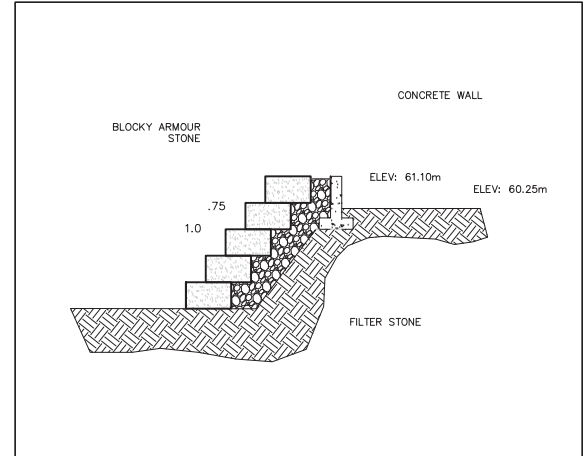
No.	Description	By	Date (dd/mm/yy)



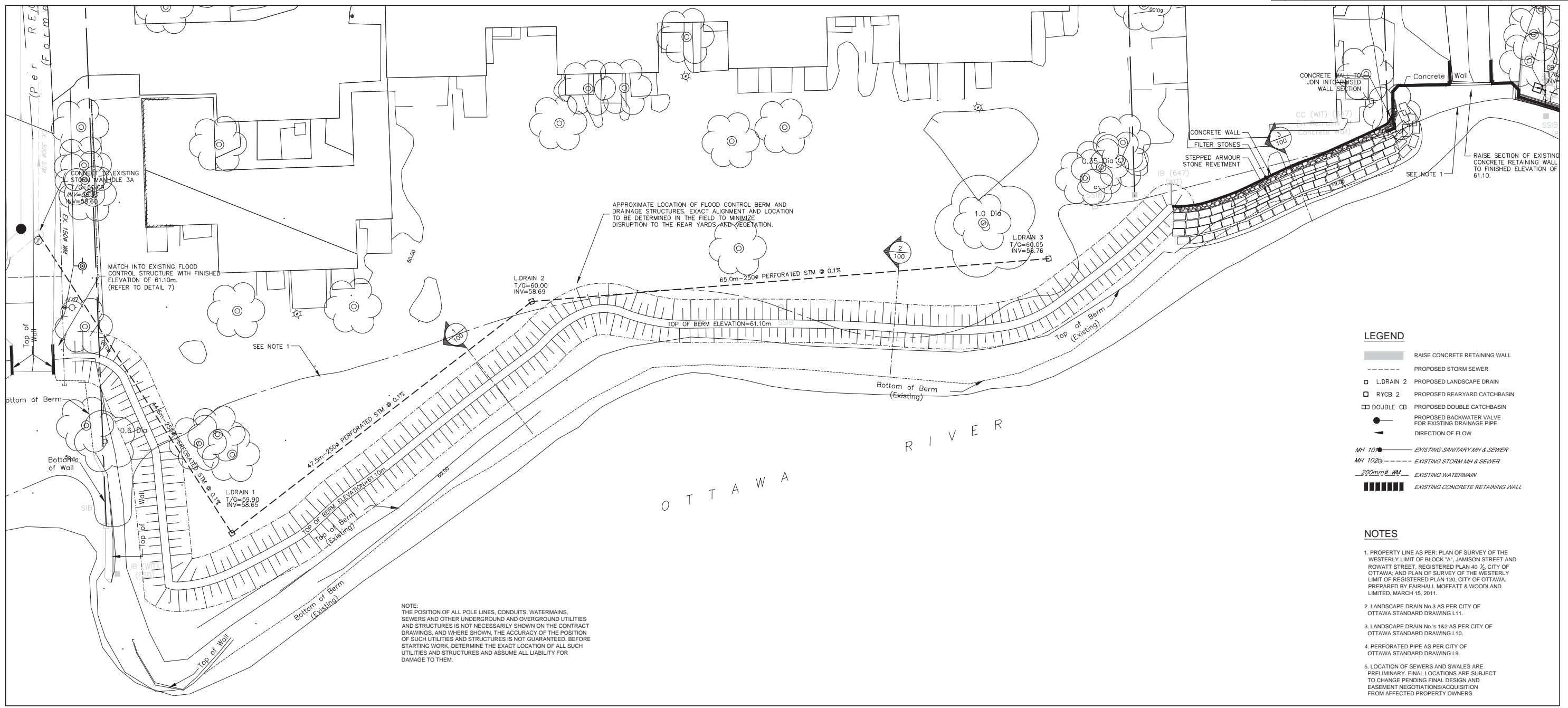
1 SECTION: FLOOD CONTROL BERM
1:75



2 SECTION: FLOOD CONTROL BERM
1:75



3 DETAIL: ARMOUR STONE REVETMENT
1:100



LEGEND

- RAISE CONCRETE RETAINING WALL
- PROPOSED STORM SEWER
- L.DRAIN 2 PROPOSED LANDSCAPE DRAIN
- RYCB 2 PROPOSED REARYARD CATCHBASIN
- DOUBLE CB PROPOSED DOUBLE CATCHBASIN
- PROPOSED BACKWATER VALVE FOR EXISTING DRAINAGE PIPE
- DIRECTION OF FLOW
- MH 101 EXISTING SANITARY MH & SEWER
- MH 102 EXISTING STORM MH & SEWER
- 200mm WM EXISTING WATERMAIN
- EXISTING CONCRETE RETAINING WALL

- NOTES**
- PROPERTY LINE AS PER PLAN OF SURVEY OF THE WESTERLY LIMIT OF BLOCK 'A', JAMISON STREET AND ROWATT STREET, REGISTERED PLAN 40 1/2, CITY OF OTTAWA; AND PLAN OF SURVEY OF THE WESTERLY LIMIT OF REGISTERED PLAN 120, CITY OF OTTAWA. PREPARED BY FAIRHALL MOFFATT & WOODLAND LIMITED, MARCH 15, 2011.
 - LANDSCAPE DRAIN No.3 AS PER CITY OF OTTAWA STANDARD DRAWING L11.
 - LANDSCAPE DRAIN No.3 AS PER CITY OF OTTAWA STANDARD DRAWING L10.
 - PERFORATED PIPE AS PER CITY OF OTTAWA STANDARD DRAWING L9.
 - LOCATION OF SEWERS AND SWALES ARE PRELIMINARY. FINAL LOCATIONS ARE SUBJECT TO CHANGE PENDING FINAL DESIGN AND EASEMENT NEGOTIATIONS/ACQUISITION FROM AFFECTED PROPERTY OWNERS.

NOTE: THE POSITION OF ALL POLE LINES, CONDUITS, WATERMANS, SEWERS AND OTHER UNDERGROUND AND OVERGROUND UTILITIES AND STRUCTURES IS NOT NECESSARILY SHOWN ON THE CONTRACT DRAWINGS, AND WHERE SHOWN, THE ACCURACY OF THE POSITION OF SUCH UTILITIES AND STRUCTURES IS NOT GUARANTEED. BEFORE STARTING WORK, DETERMINE THE EXACT LOCATION OF ALL SUCH UTILITIES AND STRUCTURES AND ASSUME ALL LIABILITY FOR DAMAGE TO THEM.