

RIDEAU VALLEY

CONSERVATION AUTHORITY

1966

★ Fifty years of conservation in the Rideau Valley ★

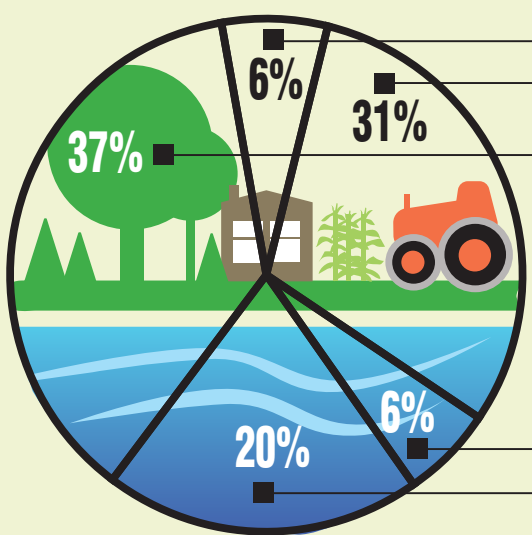
2016

The Rideau Valley Watershed has...

18

MEMBER MUNICIPALITIES

- Athens • Augusta • Beckwith • Central Frontenac
- Clarence-Rockland • Drummond/North Elmsley
- Elizabethtown-Kitley • Merrickville-Wolford • Montague
- North Dundas • North Grenville • Ottawa • Perth
- Rideau Lakes • Smiths Falls • South Frontenac
- Tay Valley • Westport



settlement
agriculture
wooded
RIDEAU VALLEY LAND COVER
water
wetland

4,234 km²

are drained by the Rideau River in Eastern Ontario

Length of Rideau River = 180 kilometres

Our First Conservation Area

Portland Bay

62,000

VISITORS ANNUALLY @ RVCVA'S CONSERVATION AREAS

Baxter
Chapman Mills
Foley Mountain
Meisel Woods

Mill Pond
Motts Mills
Perth Wildlife Reserve
Portland Bay

Richmond
Rideau Ferry
W.A. Taylor

10,000

STUDENTS ANNUALLY @ BAXTER & FOLEY OUTDOOR EDUCATION PROGRAMS

23,704
PLANNING ACT APPLICATION REVIEWS

14,952
Septic Approvals

3,600
Septic Re-inspections

12,261
written
Property Inquiries

6,479
PERMITS PROCESSED

Under Section 28 of the Conservation Authorities Act

904 km²
of hazard maps

251

ENVIRONMENTAL ASSESSMENT ACT APPLICATION REVIEWS



42
kilometres of trails

2,800
hectares of protected conservation lands

186,452
water quality samples

2,714
FISH SAMPLING SITES

highest
PEAK FLOW recorded
March 28, 1976 | 597 CMS

29,000+ volunteer hours
invested in watershed health

9+ MILLION
IN GRANTS
for LANDOWNER Stewardship Projects

9,654+ STREAMS
KM OF SURVEYED
16.5 SHORES
KM OF NATURALIZED

5.7 MILLION
TREES PLANTED
24 km² of new forest

4.5
MILLION
Raised by RVCFA