

APPENDIX B

Structures - Lower and Middle Reach

STRUCTURE ID / NAME

Bridge 1

INFORMATION

TYPE : Bridge

MATERIAL : Concrete/Structural Steel

UNDERSIDE SPAN : 37.3 m

ABUTMENT SLOPE (H:V) : 3 :1

MIN. RAILING TOP ELEV. : 86.49 m
CHANNEL INVERT ELEV. : 77.6 m

NUMBER OF PIERS : 0



File : [Aut_3012.jpg](#)
Description : Looking U/S



File : [Aut_3011.jpg](#)
Description: Looking D/S

LOCATION

APPROX. LATITUDE : 45° 15' 35"
APPROX. LONGITUDE : 75° 42' 34"

 Bridge 1



File : [Aut_3010.jpg](#)
Description: Upstream side of bridge



File : [Aut_3009.jpg](#)
Description: Downstream side of bridge

COMMENTS

Jock River Bridge #3-151 1981 on Hwy 16, near Carleton Lodge



J.F. Sabourin and Associates Inc.
1101 Prince of Wales Drive, suite 350
Ottawa, Ontario, K2C 3W7

Tel: 613.727.5199
Fax: 613.727.5699

Project Name : Jock River Hydraulic Structures Inventory
Project Number 411-02

Client : Rideau Valley Conservation Authority
Surveyed by : P. Perron, A. Vachon, J. Forget, C. Frigon

File : C:\Documents and Settings\pfrigon\My Documents\projec

Date : May 30, 2003

Bridge 1

STRUCTURE ID / NAME

Bridge 2

INFORMATION

TYPE : Bridge

MATERIAL : Concrete/Structural Steel

UNDERSIDE SPAN : 42.6 m

ABUTMENT SLOPE (H:V) : 4 :1

MIN. RAILING TOP ELEV. : 93.06 m
CHANNEL INVERT ELEV. : 85.72 m

NUMBER OF PIERS : 2
PIER WIDTH : 0.6 m
PIER LENGTH : 10.7 m
PIER SHAPE : Semicircular nose and tail



File :
Description : Looking U/S



File :
Description: Looking D/S



File :
Description: Upstream side of bridge

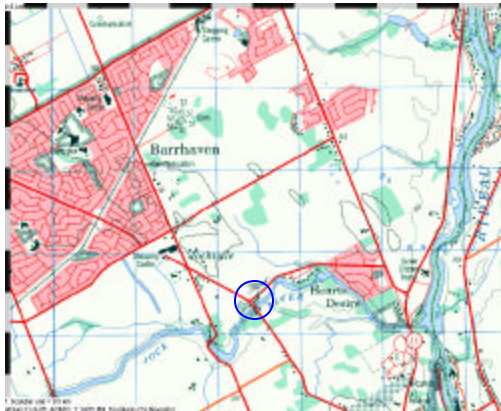


File :
Description: Downstream side of bridge

LOCATION

APPROX. LATITUDE : 45° 15' 43"
APPROX. LONGITUDE : 75° 44' 01"

 Bridge 2



COMMENTS

Bridge 1302-1962 on Jockvale Rd



J.F. Sabourin and Associates Inc.
1101 Prince of Wales Drive, suite 350
Ottawa, Ontario, K2C 3W7

Tel: 613.727.5199
Fax: 613.727.5699

Project Name : Jock River Hydraulic Structures Inventory
Project Number 411-02

Client : Rideau Valley Conservation Authority

Surveyed by : P. Perron, A. Vachon, J. Forget, C. Frigon

File : C:\Documents and Settings\pfrigon\My Documents\projec

Date : May 30, 2003

Bridge 2

STRUCTURE ID / NAME

Bridge 3

INFORMATION

TYPE : Bridge

MATERIAL : Concrete/Structural Steel

UNDERSIDE SPAN : 33.8 m

ABUTMENT SLOPE (H:V) : 3 :1

MIN. RAILING TOP ELEV. : 93.85 m
CHANNEL INVERT ELEV. : 88.37 m

NUMBER OF PIERS : 1
PIER WIDTH : 0.6 m
PIER LENGTH : 6.95 m
PIER SHAPE : Square nose and tail



File : [Aut_3410.jpg](#)
Description : Looking U/S



File : [Aut_3409.jpg](#)
Description: Looking D/S

LOCATION

APPROX. LATITUDE : 45° 15' 30"
APPROX. LONGITUDE : 75° 44' 26"

 Bridge 3



File : [Aut_3013.jpg](#)
Description: Upstream side of bridge



File : [Aut_3014.jpg](#)
Description: Downstream side of bridge

COMMENTS

Bridge near residence: 3432 Greenbank Road



J.F. Sabourin and Associates Inc.
1101 Prince of Wales Drive, suite 350
Ottawa, Ontario, K2C 3W7

Tel: 613.727.5199
Fax: 613.727.5699

Project Name : Jock River Hydraulic Structures Inventory
Project Number 411-02

Client : Rideau Valley Conservation Authority

Surveyed by : P. Perron, A. Vachon, J. Forget, C. Frigon

File : C:\Documents and Settings\pfrigon\My Documents\projec

Date : May 30, 2003

Bridge 3

STRUCTURE ID / NAME

Bridge 4

INFORMATION

TYPE : Bridge

MATERIAL : Concrete/Structural Steel

UNDERSIDE SPAN : 39.0 m

ABUTMENT SLOPE (H:V) : 2 :1

MIN. RAILING TOP ELEV. : 94.07 m
CHANNEL INVERT ELEV. : 86.24 m

NUMBER OF PIERS : 2

PIER WIDTH : 0.45 m
PIER LENGTH : 10.43 m
PIER SHAPE : Semicircular nose and tail




File : Aut_3406.jpg
Description : Looking U/S



File : Aut_3407.jpg
Description: Looking D/S

LOCATION

APPROX. LATITUDE : 45° 15' 09"
APPROX. LONGITUDE : 75° 45' 54"

 Bridge 4



File : Aut_3403.jpg
Description: Upstream side of bridge



File : Aut_3408.jpg
Description: Downstream side of bridge

COMMENTS

Bridge #1969 on Cedarview Road



J.F. Sabourin and Associates Inc.
1101 Prince of Wales Drive, suite 350
Ottawa, Ontario, K2C 3W7

Tel: 613.727.5199
Fax: 613.727.5699

Project Name : Jock River Hydraulic Structures Inventory
Project Number 411-02

Client : Rideau Valley Conservation Authority

Surveyed by : P. Perron, A. Vachon, J. Forget, C. Frigon

File : C:\Documents and Settings\pfrigon\My Documents\projec

Date : May 30, 2003

Bridge 4

STRUCTURE ID / NAME

Bridge 5

INFORMATION

TYPE : Bridge

MATERIAL : Concrete/Structural Steel

UNDERSIDE SPAN : 81.92 m

ABUTMENT SLOPE (H:V) : 3 :1

MIN. RAILING TOP ELEV. : 95.29 m

CHANNEL INVERT ELEV. : m

NUMBER OF PIERS : 2

PIER WIDTH : 1.40 m

PIER LENGTH : m

PIER SHAPE : Triple-cylinder piers without diaphragm



File : [Aut_3416.jpg](#)
Description : Looking U/S

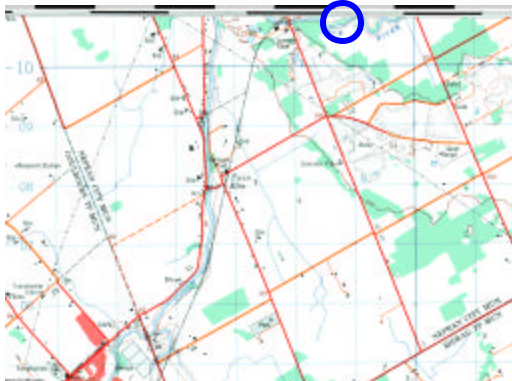


File : [Aut_3421.jpg](#)
Description: Looking D/S

LOCATION

APPROX. LATITUDE : 45° 14' 56"
APPROX. LONGITUDE : 75° 46' 52"

 Bridge 5



File : [Aut_3415.jpg](#)
Description: Upstream side of bridge



File : [Aut_3411.jpg](#)
Description: Downstream side of bridge

COMMENTS

Bridge #03-550 1992 on 416 Highway



J.F. Sabourin and Associates Inc.
1101 Prince of Wales Drive, suite 350
Ottawa, Ontario, K2C 3W7

Tel: 613.727.5199
Fax: 613.727.5699

Project Name : Jock River Hydraulic Structures Inventory
Project Number 411-02

Client : Rideau Valley Conservation Authority

Surveyed by : P. Perron, A. Vachon, J. Forget, C. Frigon

File : C:\Documents and Settings\pfrigon\My Documents\projec

Date : May 30, 2003

Bridge 5

STRUCTURE ID / NAME

Bridge 6

INFORMATION

TYPE : Bridge

MATERIAL : Concrete

UNDERSIDE SPAN : 34.74 m

ABUTMENT SLOPE (H:V) : 3 :1

MIN. RAILING TOP ELEV. : 96.23 m

CHANNEL INVERT ELEV. : 90.15 m

NUMBER OF PIERS : 0



File : Aut_3400.jpg
Description : Looking U/S

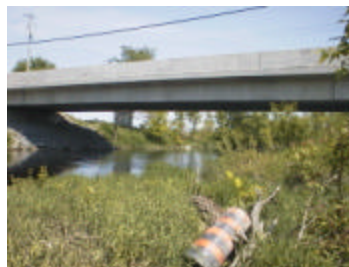


File : Aut_3399.jpg
Description: Looking D/S

LOCATION

APPROX. LATITUDE : 45° 14' 56"
APPROX. LONGITUDE : 75° 46' 52"

 Bridge 6



File : Aut_3401.jpg
Description: Upstream side of bridge



File : Aut_3398.jpg
Description: Downstream side of bridge

COMMENTS

Bridge on Moodie Drive near of Lumber Yard



J.F. Sabourin and Associates Inc.
1101 Prince of Wales Drive, suite 350
Ottawa, Ontario, K2C 3W7

Tel: 613.727.5199
Fax: 613.727.5699

Project Name : Jock River Hydraulic Structures Inventory
Project Number 411-02

Client : Rideau Valley Conservation Authority
Surveyed by : P. Perron, A. Vachon, J. Forget, C. Frigon

File : C:\Documents and Settings\pfrigon\My Documents\projec
Date : May 30, 2003

Bridge 6

STRUCTURE ID / NAME

Bridge 7

INFORMATION

TYPE : Bridge

MATERIAL : Structural Steel

UNDERSIDE SPAN : 45.00 m

ABUTMENT SLOPE (H:V) : vertical

MIN. RAILING TOP ELEV. : 95.55 m

CHANNEL INVERT ELEV. : m

NUMBER OF PIERS : 0



File : [Aut_3394.jpg](#)
Description : Looking U/S



File : [Aut_3393.jpg](#)
Description: Looking D/S

LOCATION

APPROX. LATITUDE : 45° 14' 56"
APPROX. LONGITUDE : 75° 47' 35"

 Bridge 7



File : [Aut_3397.jpg](#)
Description: Upstream side of bridge



File : [Aut_3395.jpg](#)
Description: Downstream side of bridge

COMMENTS

Railway near of Lumber Yard



J.F. Sabourin and Associates Inc.
1101 Prince of Wales Drive, suite 350
Ottawa, Ontario, K2C 3W7

Tel: 613.727.5199
Fax: 613.727.5699

Project Name : Jock River Hydraulic Structures Inventory
Project Number 411-02

Client : Rideau Valley Conservation Authority

Surveyed by : P. Perron, A. Vachon, J. Forget, C. Frigon

File : C:\Documents and Settings\pfrigon\My Documents\projec

Date : May 30, 2003

Bridge 7

STRUCTURE ID / NAME

Bridge 8

INFORMATION

TYPE : Bridge

MATERIAL : Concrete

UNDERSIDE SPAN : 7.25 m

ABUTMENT SLOPE (H:V) : Vertical

MIN. RAILING TOP ELEV. : 93.55 m
CHANNEL INVERT ELEV. : 89.34 m

NUMBER OF PIERS : 0



File : [Aut_3373.jpg](#)
Description : Looking U/S



File : [Aut_3374.jpg](#)
Description: Looking D/S

LOCATION

APPROX. LATITUDE : 45° 15' 16"
APPROX. LONGITUDE : 75° 48' 33"

 Bridge 8



File : [Aut_3376.jpg](#)
Description: Upstream side of bridge



File : [Aut_3375.jpg](#)
Description: Downstream side of bridge

COMMENTS

Bridge on Steeple Hill Cres



J.F. Sabourin and Associates Inc.
1101 Prince of Wales Drive, suite 350
Ottawa, Ontario, K2C 3W7

Tel: 613.727.5199
Fax: 613.727.5699

Project Name : Jock River Hydraulic Structures Inventory
Project Number 411-02

Client : Rideau Valley Conservation Authority
Surveyed by : P. Perron, A. Vachon, J. Forget, C. Frigon

File : C:\Documents and Settings\pfrigon\My Documents\projec
Date : May 30, 2003

Bridge 8

STRUCTURE ID / NAME

Bridge 11

INFORMATION

TYPE : Bridge

MATERIAL : Concrete/Structural Steel

UNDERSIDE SPAN : 6.10 m

ABUTMENT SLOPE (H:V) : Vertical

MIN. RAILING TOP ELEV. : 94.44 m
CHANNEL INVERT ELEV. : 90.12 m

NUMBER OF PIERS : 0



File : [Aut_3382.jpg](#)
Description : Looking U/S

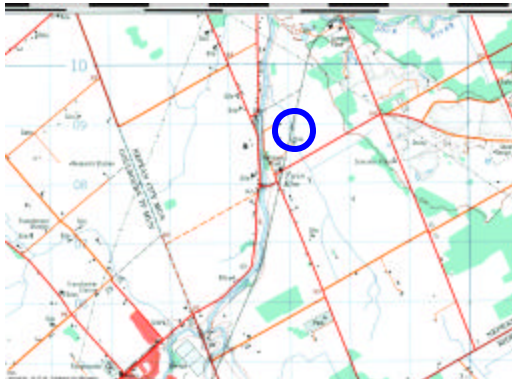


File : [Aut_3383.jpg](#)
Description: Looking D/S

LOCATION

APPROX. LATITUDE : 45° 13' 58"
APPROX. LONGITUDE : 75° 48' 05"

 Bridge 11



File : [Aut_3384.jpg](#)
Description: Upstream side of bridge



File : [Aut_3385.jpg](#)
Description: Downstream side of bridge

COMMENTS

Railway Bridge near of Cambrian Road



J.F. Sabourin and Associates Inc.
1101 Prince of Wales Drive, suite 350
Ottawa, Ontario, K2C 3W7

Tel: 613.727.5199
Fax: 613.727.5699

Project Name : Jock River Hydraulic Structures Inventory
Project Number 411-02

Client : Rideau Valley Conservation Authority
Surveyed by : P. Perron, A. Vachon, J. Forget, C. Frigon

File : C:\Documents and Settings\pfrigon\My Documents\projec
Date : May 30, 2003

Bridge 11

STRUCTURE ID / NAME

Culvert 12

INFORMATION

TYPE : Culvert
SHAPE : rectangular
MATERIAL : concrete

HEIGHT : 2.60 m
WIDTH : 3.00 m

LENGTH : 14.70 m
UPSTREAM INVERT : 90.27 m

DOWNSTREAM INVERT : 89.75 m
SLOPE : 3.54 %
MIN. RAILING TOP ELEV. : 93.64 m

APPROXIMATE CAPACITY: --- m³/s
(INLET CONTROL TO RAILING TOP ELEV.)

LOCATION

APPROX. LATITUDE : 45° 13' 42"
APPROX. LONGITUDE : 75° 47' 56"

 Culvert 12



File : [Aut_3389.jpg](#)
Description : Looking U/S



File : [Aut_33907.jpg](#)
Description: Looking D/S



File : [Aut_3392.jpg](#)
Description: Upstream side of culvert



File : [Aut_3391.jpg](#)
Description: Downstream side of culvert

COMMENTS

Culvert on Cambrian Road



J.F. Sabourin and Associates Inc.
1101 Prince of Wales Drive, suite 350
Ottawa, Ontario, K2C 3W7

Tel: 613.727.5199
Fax: 613.727.5699

Project Name : Jock River Hydraulic Structures Inventory
Project Number 411-02

Client : Rideau Valley Conservation Authority

Surveyed by : P. Perron, A. Vachon, J. Forget, C. Frigon

File : C:\Documents and Settings\pfrigon\My Documents\projec

Date : May 30, 2003

Culvert 12

STRUCTURE ID / NAME

Bridge 13

INFORMATION

TYPE : Bridge

MATERIAL : Concrete

UNDERSIDE SPAN : 52.00 m

ABUTMENT SLOPE (H:V) : 2 : 1

MIN. RAILING TOP ELEV. : 94.50 m
CHANNEL INVERT ELEV. : 86.20 m

NUMBER OF PIERS : 2

PIER WIDTH : 0.6 m
PIER LENGTH : 8.2 m
PIER SHAPE : Semicircular nose and tail




File : [Aut_3377.jpg](#)
Description : Looking U/S



File : [Aut_3378.jpg](#)
Description: Looking D/S

LOCATION

APPROX. LATITUDE : 45° 13' 27"
APPROX. LONGITUDE : 75° 48' 29"

 Bridge 13



File : [Aut_3381.jpg](#)
Description: Upstream side of bridge



File : [Aut_3380.jpg](#)
Description: Downstream side of bridge

COMMENTS

Bridge on Cambrian Road



J.F. Sabourin and Associates Inc.
1101 Prince of Wales Drive, suite 350
Ottawa, Ontario, K2C 3W7

Tel: 613.727.5199
Fax: 613.727.5699

Project Name : Jock River Hydraulic Structures Inventory
Project Number 411-02

Client : Rideau Valley Conservation Authority

Surveyed by : P. Perron, A. Vachon, J. Forget, C. Frigon

File : C:\Documents and Settings\pfrigon\My Documents\projec

Date : May 30, 2003

Bridge 13

STRUCTURE ID / NAME

Garland culvert

INFORMATION

TYPE : Box Culvert
SHAPE : Rectangular
MATERIAL : Concrete

HEIGHT : 0.75 m
WIDTH : 2.25 m

LENGTH : 5 m
UPSTREAM INVERT : 104.3 m
DOWNSTREAM INVERT : 104.3 m
TOP OF ROAD : 105.5 m



File:
Description: [Looking upstream](#)

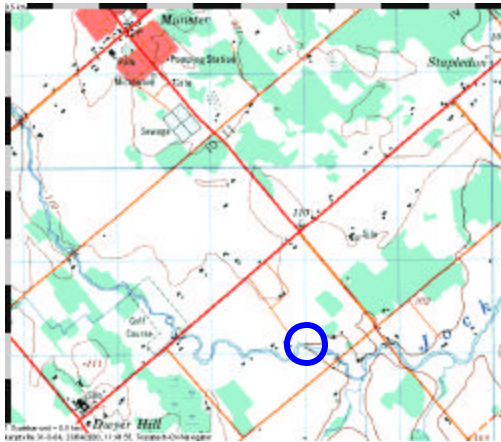


File :
Description: [Looking downstream](#)

LOCATION

APPROX. LATITUDE :
APPROX. LONGITUDE :

 Garland culvert



File :
Description: [Upstream side of culvert](#)



File :
Description: [Downstream side of culvert](#)

COMMENTS

JFSA 26A



J.F. Sabourin and Associates Inc.
1101 Prince of Wales Drive, suite 350
Ottawa, Ontario, K2C 3W7

Tel: 613.727.5199
Fax: 613.727.5699

Project Name : Jock River Hydraulic Structures Inventory
Project Number 411-02
Client : Rideau Valley Conservation Authority
Surveyed by : P Frigon
File :
Date : 10-Oct-04

Culvert 26A

STRUCTURE ID / NAME

Bridge 25

INFORMATION

TYPE : Bridge

MATERIAL : Concrete

UNDERSIDE SPAN : 16.8 m

ABUTMENT SLOPE (H:V) : Vertical

MIN. RAILING TOP ELEV. : 104.76 m

CHANNEL INVERT ELEV. : 97.79 m

NUMBER OF PIERS : 0



File: [Aut_3063.jpg](#)
Description: [Looking upstream](#)



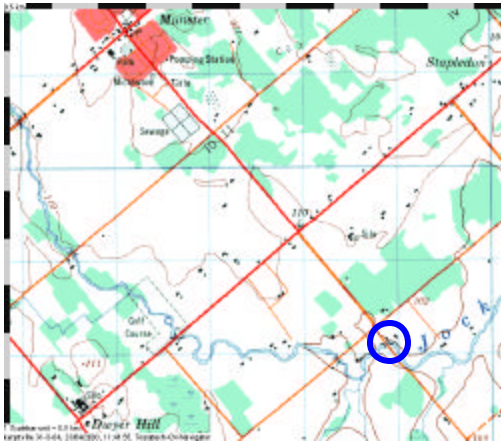
File : [Aut_3064.jpg](#)
Description: [Looking downstream](#)

LOCATION

APPROX. LATITUDE : 45° 08' 05"

APPROX. LONGITUDE : 75° 54' 15"

 Bridge 25



File : [Aut_3065.jpg](#)
Description: [Upstream side of bridge](#)



File : [Aut_3066.jpg](#)
Description: [Downstream side of bridge](#)

COMMENTS

At Munster Rd



J.F. Sabourin and Associates Inc.
1101 Prince of Wales Drive, suite 350
Ottawa, Ontario, K2C 3W7

Tel: 613.727.5199
Fax: 613.727.5699

Project Name : Jock River Hydraulic Structures Inventory
Project Number 411-02

Client : Rideau Valley Conservation Authority
Surveyed by : P. Perron, A. Vachon, J. Forget, C. Frigon

File : C:\Documents and Settings\pfrigon\My Documents\projects\RV
Date : May 26, 2003

Bridge 25

STRUCTURE ID / NAME

Bridge 26

INFORMATION

TYPE : Bridge

MATERIAL : Concrete

UNDERSIDE SPAN : 16.5 m

ABUTMENT SLOPE (H:V) : Vertical

MIN. RAILING TOP ELEV. : 102.31 m

CHANNEL INVERT ELEV. : 98.35 m

NUMBER OF PIERS : 0



File : Aut_3069.jpg

Description : Looking U/S



File : Aut_3071.jpg

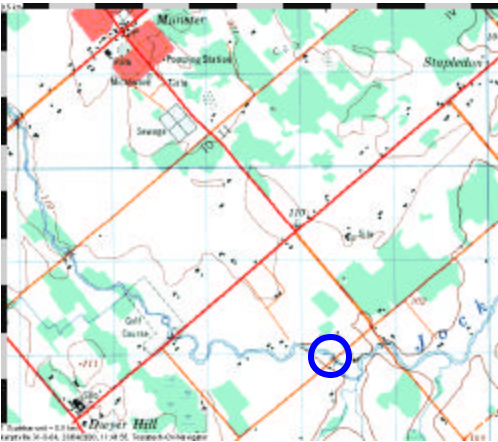
Description: Looking downstream

LOCATION

APPROX. LATITUDE : 45° 08' 00"

APPROX. LONGITUDE : 75° 54' 38"

 Bridge 26



File : Aut_3067.jpg

Description: Upstream side of bridge



File : Aut_3070.jpg

Description: Downstream side of bridge

COMMENTS

Jock Trail Bridge - Jock Trail



J.F. Sabourin and Associates Inc.
1101 Prince of Wales Drive, suite 350
Ottawa, Ontario, K2C 3W7

Tel: 613.727.5199

Fax: 613.727.5699

Project Name : Jock River Hydraulic Structures Inventory

Project Number 411-02

Client : Rideau Valley Conservation Authority

Surveyed by : P. Perron, A. Vachon, J. Forget, C. Frigon

File : C:\Documents and Settings\pfrigon\My Documents\projects\RV

Date : May 26, 2003

Bridge 26

STRUCTURE ID / NAME

Bridge 27

INFORMATION

TYPE : Bridge

MATERIAL : Concrete

UNDERSIDE SPAN : 15 m

ABUTMENT SLOPE (H:V) : Vertical

MIN. RAILING TOP ELEV. : 108.90 m

CHANNEL INVERT ELEV. : 104.33 m

NUMBER OF PIERS : 0



File : Aut_3108.jpg

Description : Looking U/S



File : Aut_3106.jpg

Description: Looking downstream

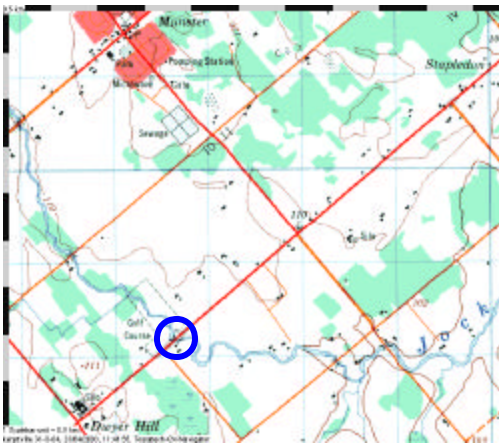


LOCATION

APPROX. LATITUDE : 45° 08' 06"

APPROX. LONGITUDE : 75° 55' 58"

 Bridge 27



File : Aut_3109.jpg

Description: Upstream side of bridge



File : Aut_3107.jpg

Description: Downstream side of bridge

COMMENTS

Bridge 68U 129 - Franktown Road



J.F. Sabourin and Associates Inc.
1101 Prince of Wales Drive, suite 350
Ottawa, Ontario, K2C 3W7

Tel: 613.727.5199

Fax: 613.727.5699

Project Name : Jock River Hydraulic Structures Inventory

Project Number 411-02

Client : Rideau Valley Conservation Authority

Surveyed by : P. Perron, A. Vachon, J. Forget, C. Frigon

File : C:\Documents and Settings\pfrigon\My Documents\projects\RV

Date : May 26, 2003

Bridge 27

STRUCTURE ID / NAME

Bridge 28

INFORMATION

TYPE : Bridge

MATERIAL : Concrete

UNDERSIDE SPAN : 13.7 m

ABUTMENT SLOPE (H:V) : Vertical

MIN. RAILING TOP ELEV. : 110.07 m

CHANNEL INVERT ELEV. : 105.76 m

NUMBER OF PIERS : 0



File : [Aut_3104.jpg](#)
Description : Looking U/S

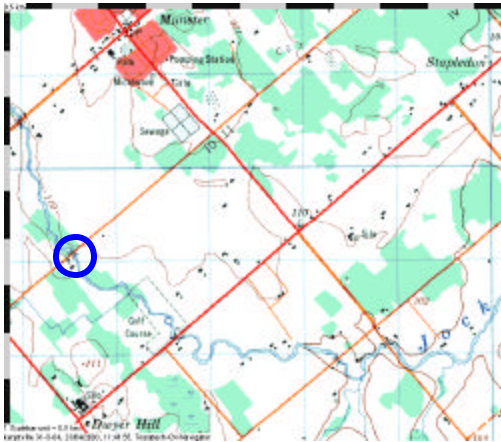


File : [Aut_3103.jpg](#)
Description: Looking downstream

LOCATION

APPROX. LATITUDE : 45° 08' 36"
APPROX. LONGITUDE : 75° 56' 48"

 Bridge 28



File : [Aut_3105.jpg](#)
Description: Upstream side of bridge



File : [Aut_3102.jpg](#)
Description: Downstream side of bridge

COMMENTS

Copeland Road Bridge



J.F. Sabourin and Associates Inc.
1101 Prince of Wales Drive, suite 350
Ottawa, Ontario, K2C 3W7

Tel: 613.727.5199
Fax: 613.727.5699

Project Name : Jock River Hydraulic Structures Inventory
Project Number 411-02

Client : Rideau Valley Conservation Authority
Surveyed by : P. Perron, A. Vachon, J. Forget, C. Frigon
File : C:\Documents and Settings\pfrigon\My Documents\projects\RV
Date : May 26, 2003

Bridge 28

STRUCTURE ID / NAME

Bridge 29

INFORMATION

TYPE : Bridge

MATERIAL : Concrete

UNDERSIDE SPAN : 15.8 m

ABUTMENT SLOPE (H:V) : Vertical

MIN. RAILING TOP ELEV. : 113.91 m

CHANNEL INVERT ELEV. : 108.84 m

NUMBER OF PIERS : 0



File: Aut_3061.jpg
Description: Looking upstream



File : Aut_3060.jpg
Description: Looking downstream

LOCATION

APPROX. LATITUDE : 45° 09' 22"
APPROX. LONGITUDE : 75° 57' 14"

 Bridge 29



File : Aut_3101.jpg
Description: Upstream side of bridge



File : Aut_3059.jpg
Description: Downstream side of bridge

COMMENTS

Munster Bridge at Bleeks Rd



J.F. Sabourin and Associates Inc.
1101 Prince of Wales Drive, suite 350
Ottawa, Ontario, K2C 3W7

Tel: 613.727.5199
Fax: 613.727.5699

Project Name : Jock River Hydraulic Structures Inventory

Project Number 411-02

Client : Rideau Valley Conservation Authority

Surveyed by : P. Perron, A. Vachon, J. Forget, C. Frigon

File : C:\Documents and Settings\pfrigon\My Documents\projects\RVCA j

Date : May 26, 2003

Bridge 29

STRUCTURE ID / NAME

Bridge 30

INFORMATION

TYPE : Bridge

MATERIAL : Concrete

UNDERSIDE SPAN : 20.6 m

ABUTMENT SLOPE (H:V) : 3 : 1

MIN. RAILING TOP ELEV. : 117.69 m

CHANNEL INVERT ELEV. : 111.53 m

NUMBER OF PIERS : 0



File: [Aut_3056.jpg](#)
Description: Looking upstream

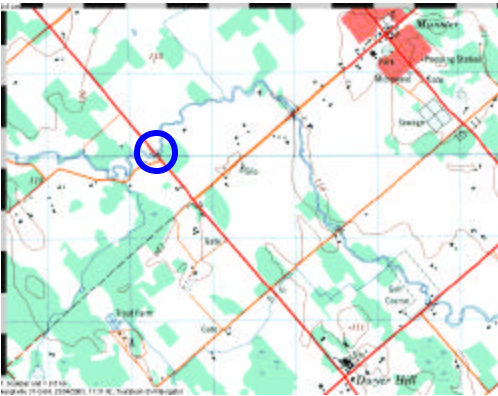


File : [Aut_3057.jpg](#)
Description: Looking downstream

LOCATION

APPROX. LATITUDE : 45° 09' 05"
APPROX. LONGITUDE : 75° 58' 30"

 Bridge 30



File : [Aut_3058.jpg](#)
Description: Upstream side of bridge



File : [Aut_3055.jpg](#)
Description: Downstream side of bridge

COMMENTS

At Dwyer Hill Rd #3



J.F. Sabourin and Associates Inc.
1101 Prince of Wales Drive, suite 350
Ottawa, Ontario, K2C 3W7

Tel: 613.727.5199
Fax: 613.727.5699

Project Name : Jock River Hydraulic Structures Inventory
Project Number 411-02

Client : Rideau Valley Conservation Authority
Surveyed by : P. Perron, A. Vachon, J. Forget, C. Frigon

File : C:\Documents and Settings\pfrigon\My Documents\projects\RV

Date : May 26, 2003

Bridge 30

STRUCTURE ID / NAME

Bridge 31

INFORMATION

TYPE : Bridge

MATERIAL : Concrete

UNDERSIDE SPAN : 16.2 m

ABUTMENT SLOPE (H:V) : Vertical

MIN. RAILING TOP ELEV. : 122.19 m

CHANNEL INVERT ELEV. : 118.44 m

NUMBER OF PIERS : 1

PIER WIDTH : 0.6 m

PIER LENGTH : 6.3 m

PIER SHAPE : Square nose



File: Aut_3051.jpg

Description: Looking upstream



File : Aut_3052.jpg

Description: Looking downstream

LOCATION

APPROX. LATITUDE : 45° 09' 06"

APPROX. LONGITUDE : 76° 00' 12"

 Bridge 31



File : Aut_3053.jpg

Description: Upstream side of bridge



File : Aut_3054.jpg

Description: Downstream side of bridge

COMMENTS

At McCaffrey trail



J.F. Sabourin and Associates Inc.
1101 Prince of Wales Drive, suite 350
Ottawa, Ontario, K2C 3W7

Tel: 613.727.5199

Fax: 613.727.5699

Project Name : Jock River Hydraulic Structures Inventory

Project Number 411-02

Client : Rideau Valley Conservation Authority

Surveyed by : P. Perron, A. Vachon, J. Forget, C. Frigon

File : C:\Documents and Settings\pfrigon\My Documents\projects\RV

Date : May 26, 2003

Bridge 31