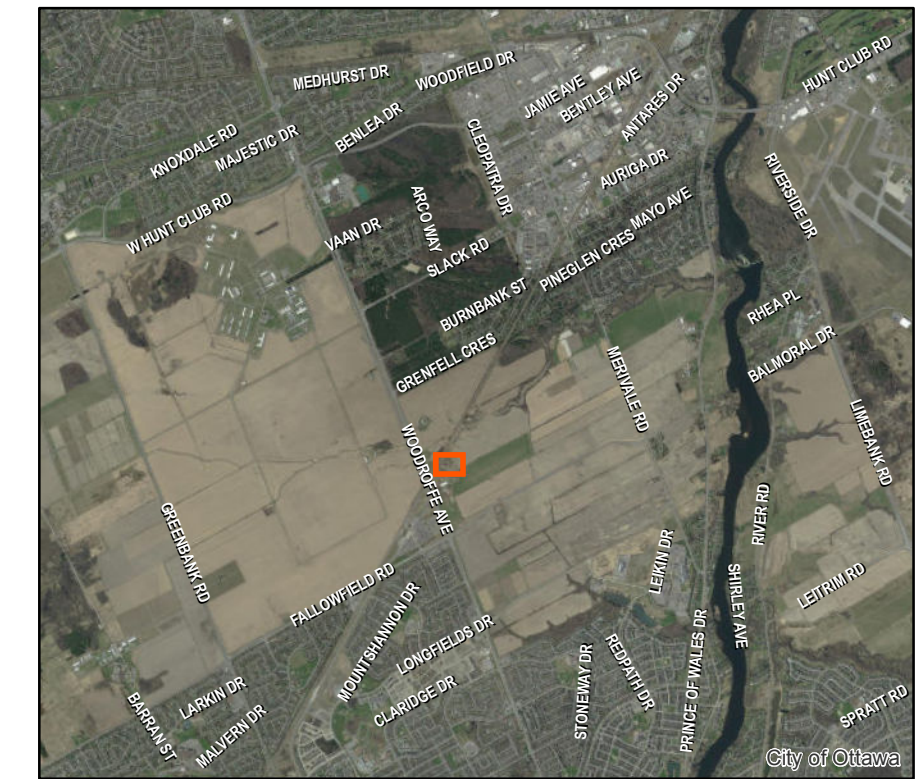


Note: Contours should be considered approximate. (Contour Interval is 0.25m)



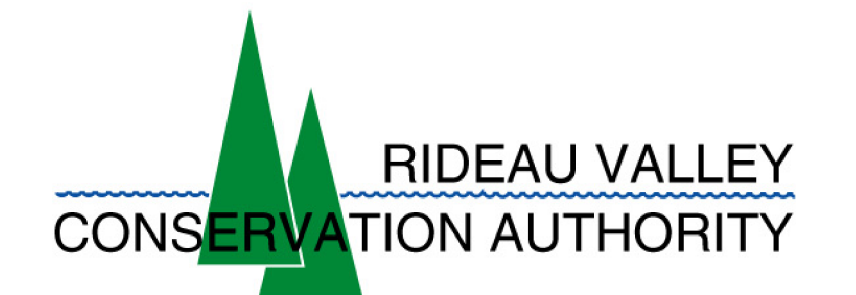
Zone 2 Aquatics			
8250 Shoreline Mixture		8175 - FACW Wetland Mixture	
Common Name	Scientific Name	Common Name	Scientific Name
Blue Vervain	<i>Verbena hastata</i>	Bebbs Sedge	<i>Carex bebbii</i>
Blunt Broom Sedge	<i>Carex scoparia</i>	Blue Lobelia	<i>Lobelia siphilitica</i>
Fox Sedge	<i>Carex vulpinoidea</i>	Blue Vervain	<i>Verbena hastata</i>
Green Bulrush	<i>Scirpus atrovirens</i>	Blunt Broom Sedge	<i>Carex scoparia</i>
Purple Stemmed Aster	<i>Aster puniceus</i>	Bonset	<i>Eupatorium perfoliatum</i>
Spotted Joe Pye Weed	<i>Eupatorium maculatum</i>	Fox Sedge	<i>Carex vulpinoidea</i>
Swamp Milkweed	<i>Asclepias incarnata</i>	Green Bulrush	<i>Scirpus atrovirens</i>
Sweet Flag	<i>Acorus americanus</i>	Heath Aster	<i>Aster pilosus</i>
Virginia Wild Rye	<i>Elymus virginicus</i>	Lurid Sedge	<i>Carex lurida</i>
8215 Bank Seed Mixture		New England Aster	
Common Name	Scientific Name	Common Name	Scientific Name
Big Bluestem	<i>Andropogon gerardii</i>	Purple Stemmed Aster	<i>Aster puniceus</i>
Black Eyed Susan	<i>Rudbeckia hirta</i>	Soft Rush	<i>Juncus effusus</i>
Bottlebrush Grass	<i>Elymus hystrix</i>	Spotted Joe Pye Weed	<i>Eupatorium maculatum</i>
Fowl Bluegrass	<i>Poa palustris</i>	Square Stemmed Monkey Flower	<i>Mimulus ringens</i>
Fowl Manngrass	<i>Glyceria striata</i>	Swamp Milkweed	<i>Asclepias incarnata</i>
Fox Sedge	<i>Carex vulpinoidea</i>	Tall Manna Grass	<i>Glyceria striata</i>
New England aster	<i>Aster novae-angliae</i>	Virginia Wild Rye	<i>Elymus virginicus</i>
		Woolgrass	<i>Scirpus cyperinus</i>

Black Rapids Wetland Creation Project: Plan View Landscape



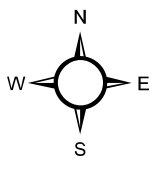
- Tile Outlets to be protected
- Culverts
- Landscape**
- Zone 1 (2933 m²)
- Zone 2 (5088 m²)
- Zone 4 (4238 m²)
- Conceptual Area (1.23 ha)

Zone 1 Terrestrial - near waters edge		Zone 4 Terrestrial	
Common Name	Scientific Name	Common Name	Scientific Name
Bebbs Willow	<i>Salix bebbiana</i>	Nannyberry	<i>Viburnum lentago</i>
Highbush Cranberry	<i>Viburnum trilobum</i>	Black/Common Elderberry	<i>Sambucus nigra sp. canadensis</i>
Pussy Willow	<i>Salix discolor</i>	Silver Maple	<i>Acer saccharinum</i>
Red Osier Dogwood	<i>Cornus sericea L. ssp. Sericea/ Cornus stolonifera</i>	Sanbar Willow	<i>Salix exigua</i>
Common Buttonbush	<i>Cephalanthus occidentalis</i>	Staghorn Sumac	<i>Rhus typhina L.</i>
Red Maple	<i>Acer rubrum</i>	Slender Willow	<i>Salix petiolaris</i>
Gray Dogwood	<i>Cornus Racemosa</i>	Red Maple	<i>Acer rubrum</i>
		Speckled Alder	<i>Albus incana</i>



Map Scale: 1:350

Projection note:
U.T.M. Zone 18 - NAD 83 Datum



File Location: Z:\GIS_Data\CA_Data\Habitat_Mapping	
Created by: czerwinski	
Modified by: czerwinski	Date Modified: 01/6/2016
Published by: czerwinski	Date Published: 01/6/2016

Base-mapping and GIS services provided courtesy of the Rideau Valley Conservation Authority, under License with the Ontario Ministry of Natural Resources. © Queen's Printer for Ontario, 2016. These maps are the property of the RVCA and the RVCA holds a copyright on them. These maps may be copied or reproduced by other parties provided that the RVCA is properly acknowledged as the original source of the information in any document, report or map in which this mapping is used, and provided that no fee is charged (other than to cover handling charges). While RVCA makes every effort to ensure that the information presented is sufficiently accurate for the intended uses of the map, there is an inherent margin of error in all mapping products, and the RVCA cannot guarantee the accuracy of the mapping for all possible uses. All end-users of the information contained herein must therefore determine for themselves if the information is of suitable accuracy for their purposes.

