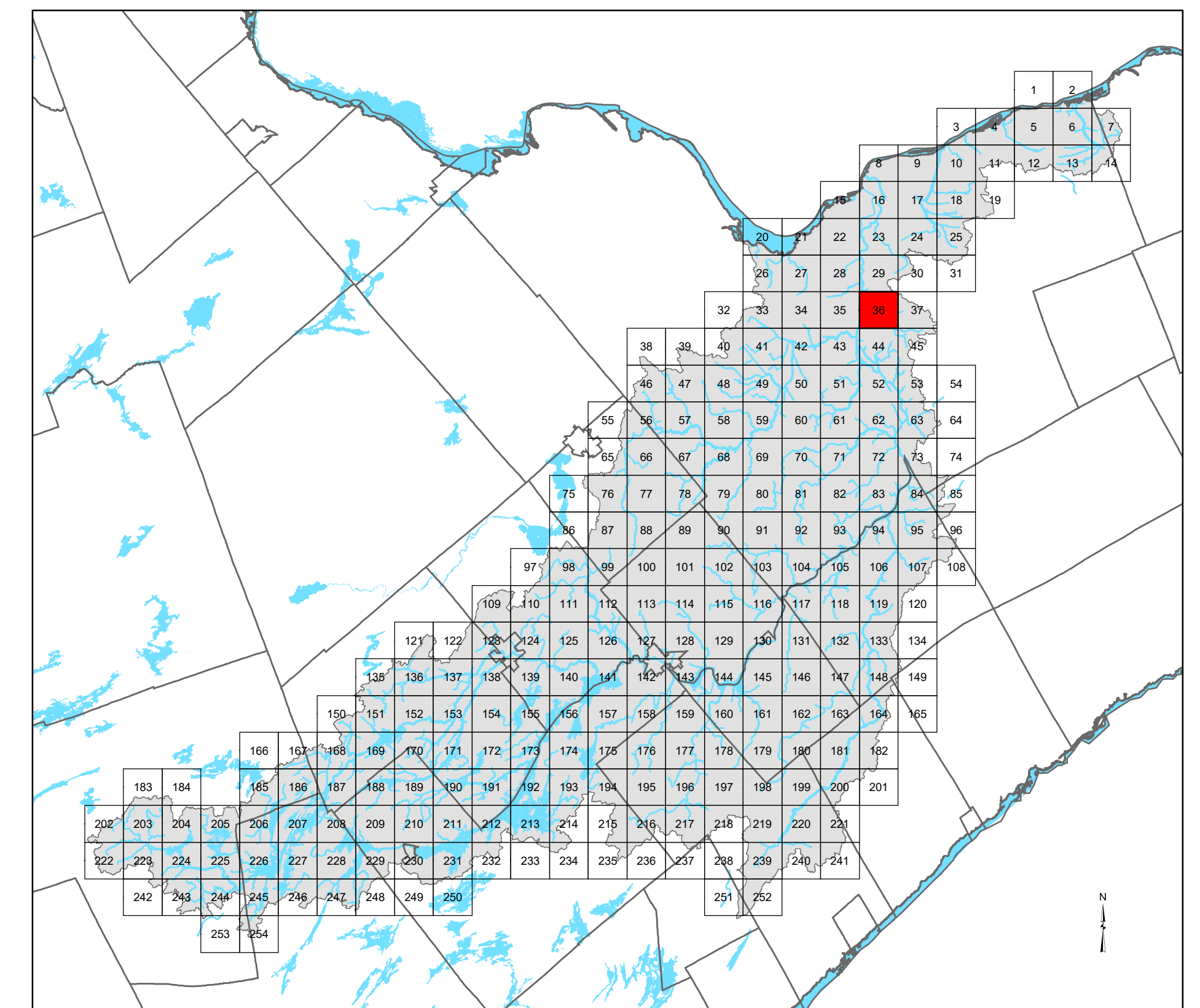


**Legend**

- Buildings
- Parcel
- Lot and Concession
- RVCA Boundary
- 100yr Floodline
- Regulation Limit
- Regulation Limit including Allowances**
  - Floodline
  - Geo-technical Hazard Limit
  - Meander Belt
  - Stable Slope
  - Top of Slope
  - Unstable Slope
  - Wetland
- Waterbodies**
  - Lake, River
  - River, Creek
- Evaluated Wetlands**
  - Evaluated-Provincial
  - Evaluated-Other
- Transportation**
  - Freeway
  - Expressway / Highway
  - Collector; Arterial
  - Local / Street
  - Private/Rural
  - Ramp
  - Rapid Transit
  - Service

**SHEET INDEX**



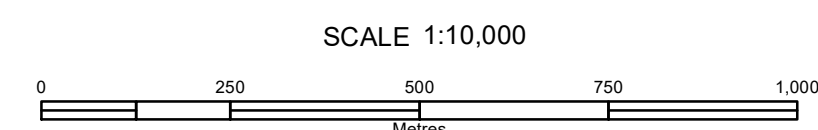
This map has been compiled from various sources and is for information purposes only. The Rideau Valley Conservation Authority takes no responsibility for, nor guarantees, the accuracy of all the information contained within the map.

Note 1: Hazardous lands, river and stream valleys, or wetlands may exist beyond the mapped extent of regulation limits, but their boundaries are not yet defined. Delineation of corresponding regulation limits will take place as additional supporting technical information becomes available.

These maps should be read in conjunction with a brief entitled "RVCA Methods for Delineation of Regulation Limits in Accordance with Ontario Regulation 97/04 (November 16, 2005)", as amended. For more information contact RVCA at (613) 692-3571.

RVCA Generic Regulation Limits Maps Created: November 2005

Base Data provided by Ontario Ministry of Natural Resources and Forestry © Queen's Printer for Ontario, 2022.



Projection : Transverse Mercator  
Datum: North American Datum 1983

Scale of 1:10000 is only accurate when map plotted on ANSI D paper (56.50cmx86.16cm)

NO.	REVISIONS	DATE
1	Ontario Regulation 174/06 Approved	May 4 2006
2	Base Data Update (See Change Order #2)	Jan. 1, 2010
3	New Floodplain, Slope Hazard (see Staff Report to Board of Directors)	July 26, 2017
4		
5		

(ONTARIO REGULATION 97/04)	
<b>REGULATION FOR DEVELOPMENT, INTERFERENCE WITH WETLANDS, AND ALTERATIONS TO SHORELINES AND WATERCOURSES</b>	
<b>ONTARIO REGULATION 174/06</b>	
REGULATION LIMITS CREATED: May 6, 2022	
REVISED BY: RVCA GIS Services	
PLOT DATE: May 6, 2022	
FILE: \\mswpg\data\data\an\GIS_Data\CA_Data\Generic_Regulations\RVCA\Development\RV3_Mosquito\Map\Mosquito_Regs_OBM_1to10K_D_DATA_DRIVEN.mxd	

SHEET NO.	36
OF	254